



การจัดทำต้นทุนต่อหน่วยผลผลิต ประจำปีงบประมาณ พ.ศ.๒๕๕๗

ขั้นตอนที่ ๒

รายงานการคำนวณต้นทุนต่อหน่วยผลผลิต

ประจำปีงบประมาณ พ.ศ. ๒๕๕๖

สำนักงานคลัง
กุมภาพันธ์ ๒๕๕๗

1

(:)

1.	605,892,123.46	95,963,898.84	79,578,425.47	781,434,447.77
2.	37,109,792.15	45,894,291.24		83,004,083.39
3.	46,130,944.19	22,877,792.66		69,008,736.85
4.	196,382,470.55	109,302,598.99		305,685,069.54
5.	46,167,573.07	100,867,143.67	1,391.00	147,036,107.74
6.	0.00	0.00	0.00	0.00
7.	521,837.23	847,841.38	0.00	1,369,678.61
	932,204,740.65	375,753,566.78	79,579,816.47	1,387,538,123.90

:

GFMS

11,909,703,852.36

—

T/E

T/E

153,618,270.24

8,337,759.82

10,293,988.57

1,059,782,661.74

4,369,488,775.63

948,463,244.31

6,949,017.90

(841,957.28)

439,650,263.08

43,936,400.00

1,119,276,554.45

2,363,210,750.00

10,522,165,728.46

1,387,538,123.90

2

1		04	13,873,904.68	451,856.48	1,033,368.08	90,060.00	5,581,151.02		21,030,340.26
2		08	114,867,942.33		1,343,363.33	99,050.00	6,896.00		116,317,251.66
3		09	22,797,498.09	18,641,179.83	3,658,280.32	119,000.00		0.00	45,215,958.24
4		10	41,864,645.80	29,384,431.70	9,644,188.46	6,914,009.40	476,107.37	0.00	88,283,382.73
5		11	20,997,298.11	43,573,234.86	5,962,096.00	516,995.00	3,380,537.35		74,430,161.32
6		12	16,807,370.82	5,344,153.31	1,138,859.78	-	2,617,435.03	7.00	25,907,825.94
7	1	13	9,873,896.17	206,736.01	512,974.08	7,888.00	232,097.80		10,833,592.06
8	2	14	9,996,920.49	188,459.50	512,880.84	1,698,976.00	349,348.00	3.00	12,746,587.83
9		15	37,900,197.82	13,624,361.49	3,460,182.51	5,224,012.96	2,593,950.98		62,802,705.76
10		17	9,374,434.40	142,885.18	339,613.04	8,000.00	149,565.00		10,014,497.62
11		21	5,950,073.00	6,247,331.50	614,862.39	2,160.00	1,423,278.00	0.00	14,237,704.89
12		22	5,305,434.90	826,196.29	616,294.92	15,800.00	934,810.00	0.00	7,698,536.11
13		23	4,931,270.02	1,064,014.26	748,949.13	63,502.00	480,463.00	0.00	7,288,198.41
14		24	3,458,311.58	396,240.46	567,876.25	-	151,470.00	0.00	4,573,898.29
15		25	5,237,957.21	478,444.48	697,794.76	211,193.00	357,672.00	73,897.39	7,056,958.84
16		26	3,554,621.29	354,246.43	961,242.38	29,519.00	124,204.00	0.00	5,023,833.10
17		27	4,305,076.29	2,072,361.82	861,641.93	53,825.00	745,673.00	0.00	8,038,578.04
18		28	4,620,650.77	5,306,362.42	1,276,177.42	34,420.00	494,798.00	0.00	11,732,408.61

19		29	5,765,663.72	1,872,153.61	1,662,693.07	5,500.00	647,573.00	0.00	9,953,583.40
20		30	5,116,729.42	707,988.67	647,535.54	50,136.00	742,569.00	2,975.26	7,267,933.89
21		31	4,768,464.78	1,183,766.90	640,909.40	120,000.00	695,831.00	0.00	7,408,972.08
22		32	3,829,153.64	752,803.29	887,737.44	20,000.00	692,614.81	0.00	6,182,309.18
23		33	3,091,779.63	304,794.88	563,937.80	16,600.00	219,985.00	2.00	4,197,099.31
24		34	4,782,978.17	2,712,479.19	583,774.66	116,412.00	557,720.00	0.00	8,753,364.02
25		35	4,249,698.02	1,546,998.29	690,743.72	41,680.00	795,239.00	251,454.22	7,575,813.25
26		36	4,745,714.86	755,414.09	598,350.42	20,674.00	288,505.00	0.00	6,408,658.37
27		37	3,409,542.71	735,411.73	702,298.37	65,120.00	149,110.00	2.00	5,061,484.81
28		38	6,110,215.29	3,106,372.83	962,131.06	69,581.00	2,401,687.55	8,812.17	12,658,799.90
29		39	4,873,422.14	1,241,312.74	918,251.74	69,794.00	1,232,353.00	10.00	8,335,143.62
30		40	4,211,093.71	637,880.39	598,115.64	85,702.00	433,672.00	1.00	5,966,464.74
31		41	3,866,845.57	629,252.28	551,469.70	67,500.00	853,817.80	4,426.00	5,973,311.35
32		42	9,321,743.97	2,539,417.36	1,996,516.05	95,047.00	915,382.00	0.00	14,868,106.38
33		43	2,924,558.36	1,021,220.44	564,541.26	39,082.00	397,957.00	2.00	4,947,361.06
34		44	4,067,363.72	1,116,089.49	669,204.97	132,268.00	682,348.00	0.00	6,667,274.18
35		45	2,549,175.85	721,849.78	725,931.59	46,918.00	127,363.00	0.00	4,171,238.22
36		46	3,119,340.36	339,690.00	484,660.39	-	367,899.20	4,250.66	4,315,840.61
37		47	11,862,837.94	4,221,760.23	2,346,504.90	38,000.00	1,672,644.80	192,526.38	20,334,274.25
38		48	5,828,048.76	1,208,965.29	640,084.43	104,269.20	1,382,473.60	0.00	9,163,841.28
39		49	3,492,204.33	395,341.78	551,492.85	-	658,209.00	0.00	5,097,247.96

40		50	3,275,449.56	612,950.76	722,291.68	95,276.00	638,490.00	0.00	5,344,458.00
41		51	4,073,279.21	768,524.95	938,174.35	76,600.00	638,436.00	0.00	6,495,014.51
42		52	4,072,109.55	1,364,005.25	569,477.93	-	933,386.00	0.00	6,938,978.73
43		53	5,328,882.59	1,378,263.41	1,058,356.90	208,865.00	1,634,808.00	0.00	9,609,175.90
44		54	3,347,093.46	896,346.29	532,429.21	2,898.00	1,242,193.00	0.00	6,020,959.96
45		55	3,417,635.89	417,043.08	587,959.93	12,000.00	775,098.00	1.00	5,209,737.90
46		56	2,896,881.91	841,541.94	649,104.93	114,215.00	145,819.00	0.00	4,647,562.78
47		57	8,919,228.30	11,287,635.21	2,079,712.52	31,076.00	2,131,912.20	18,368.42	24,467,932.65
48		58	3,492,221.45	500,028.43	763,041.30	157,192.00	690,516.00	0.00	5,602,999.18
49		59	4,345,655.32	680,497.46	559,970.37	123,022.00	718,498.00	4.00	6,427,647.15
50		60	3,517,937.42	1,798,291.33	801,285.33	65,159.80	233,803.00	0.00	6,416,476.88
51		61	3,198,039.49	507,766.05	610,211.84	127,332.00	666,525.00	118,251.73	5,228,126.11
52		62	3,773,245.48	827,462.94	674,748.97	75,127.40	322,163.40	0.00	5,672,748.19
53		63	3,659,306.47	476,901.18	704,809.59	-	468,073.00	77,396.99	5,386,487.23
54		64	6,448,151.75	5,324,085.81	896,572.35	129,090.00	1,051,630.00	9,000.00	13,858,529.91
55		65	2,770,672.26	570,122.24	517,947.57	-	473,344.40	2.00	4,332,088.47
56		66	8,720,219.87	4,991,780.17	2,502,392.78	54,357.00	806,487.00	0.00	17,075,236.82
57		67	3,214,097.76	314,960.53	502,298.47	57,167.00	315,698.00	6,187.76	4,410,409.52
58		68	3,277,358.12	549,507.79	1,169,367.65	2,820.00	124,084.00	23,924.66	5,147,062.22
59		69	3,883,858.54	589,933.12	678,389.00	913.00	411,553.00	444,976.56	6,009,623.22
60		70	4,060,393.88	411,228.50	658,707.09	80,336.00	749,698.00	5.00	5,960,368.47

61		71	3,918,671.35	857,332.79	879,121.11	-	1,046,697.00	1.00	6,701,823.25
62		72	3,459,003.62	458,071.74	552,281.62	4,858.00	1,054,257.00	0.00	5,528,471.98
63		73	4,157,601.02	1,215,991.38	1,254,074.17	177,180.00	723,030.00	32,208.91	7,560,085.48
64		74	4,728,670.59	2,302,046.39	684,576.19	48,599.00	562,768.00	0.00	8,326,660.17
65		75	6,903,870.86	4,273,347.42	2,094,584.79	143,988.00	287,596.00	0.00	13,703,387.07
66		76	4,037,238.00	545,542.01	513,157.45	30,000.00	763,252.00	7,202.77	5,896,392.23
67		77	4,986,953.97	1,005,124.10	1,132,985.58	45,604.00	894,696.00	3.00	8,065,366.65
68		78	3,866,116.81	469,525.31	750,002.27	19,442.00	188,062.00	260.00	5,293,408.39
69		79	3,541,516.48	1,295,720.70	674,272.39	-	176,583.00	3,254.22	5,691,346.79
70		80	3,154,830.15	417,224.95	596,161.42	33,147.00	226,152.00	0.00	4,427,515.52
71		81	4,029,534.64	1,411,946.81	860,652.76	45,528.00	589,124.00	5,000.00	6,941,786.21
72		82	5,155,598.71	635,610.54	886,456.95	29,284.00	1,180,479.00	0.00	7,887,429.20
73		83	3,007,390.28	485,960.96	590,719.43	102,950.00	190,237.10	12,111.94	4,389,369.71
74		84	3,842,315.43	1,254,356.26	863,934.33	230,284.00	456,341.00	23,219.93	6,670,450.95
75		85	4,318,804.32	6,159,791.18	802,205.32	192,510.00	739,688.00	0.00	12,212,998.82
76		86	10,524,576.97	3,269,828.71	2,842,248.32	18,425.00	2,417,326.23	0.00	19,072,405.23
77		87	3,386,499.26	482,110.59	502,256.79	625.00	247,531.00	0.00	4,619,022.64
78		88	4,881,442.83	1,927,635.01	772,598.84	41,680.00	381,804.80	7.00	8,005,168.48
79		89	8,201,089.08	3,608,383.43	5,709,663.60	124,974.75	959,089.80	0.00	18,603,200.66
80		90	2,940,926.34	728,150.88	584,927.37	80,689.00	159,663.91	380.40	4,494,737.90
81		91	3,884,032.32	304,191.69	537,931.14	42,938.00	210,951.41	0.00	4,980,044.56

82		92	3,589,728.91	395,363.68	550,857.28	82,360.00	603,893.00	10.00	5,222,212.87
83		93	3,839,038.19	840,672.17	640,466.57	13,142.00	231,937.60	4,049.67	5,569,306.20
84		94	3,927,931.43	1,204,166.54	620,466.20	26,486.00	237,589.00	0.00	6,016,639.17
85		95	3,416,629.76	869,272.61	503,976.60	204,189.00	88,374.00	0.00	5,082,441.97
86		116	1,312,576.18	983,637.06	414,188.95		512,483.00	0.00	3,222,885.19
			640,408,384.50	228,563,340.63	96,929,547.82	19,445,022.51	66,316,231.16	1,324,196.04	1,052,986,722.66

1		02	22,009,374.33	14,177,051.09	1,656,257.76	41,260,348.75	383,148.68	3.00	79,486,183.61
2		03	23,454,373.86	4,316,122.98	6,478,167.24	135,000.00	20,752.00	45,478.57	34,449,894.65
3		05	6,822,156.55	208,543.62	320,838.92	-	34,285.00	-	7,385,824.09
4		07	8,835,415.41	17,174,635.59	33,918,909.76	5,195,190.00	176,153.40	1.00	65,300,305.16
5		16	10,274,886.87	1,361,201.74	382,175.29	168,775.00	347,507.00	-	12,534,545.90
6		18	10,097,154.80	244,542.56	400,181.35	10,000.00	1,469,048.61	-	12,220,927.32
7		19	2,152,061.58	14,713.16	79,585.28		167,921.00	-	2,414,281.02
8		20	1,767,799.22	182,731.63	105,398.94	7,289,747.13	6,415.00	-	9,352,091.92
			85,413,222.62	37,679,542.37	43,341,514.54	54,059,060.88	2,605,230.69	45,482.57	223,144,053.67
			725,821,607.12	266,242,883.00	140,271,062.36	73,504,083.39	68,921,461.85	1,369,678.61	1,276,130,776.33

1		04	1,025,261.76	3,302,449.95	570,689.24		1,589.91	4,899,990.86	25,930,331.12
2		08	12,357,731.59	3,776.17			3,179.81	12,364,687.57	128,681,939.23
3		09	1,978,423.52	2,989.47			2,517.35	1,983,930.33	47,199,888.57
4		10	3,998,149.56	3,933.51			3,312.30	4,005,395.37	92,288,778.10
5		11	1,188,110.76	5,778,239.20	998,706.17		1,899.05	7,966,955.19	82,397,116.51
6		12	780,988.26	4,264,642.42	737,140.27		1,192.43	5,783,963.38	31,691,789.32
7	1	13	509,573.26	1,926,272.04	332,902.06		794.95	2,769,542.31	13,603,134.37
8	2	14	509,573.26	2,132,557.70	368,570.13		794.95	3,011,496.05	15,758,083.88
9		15	4,499,994.33	6,398.51			5,388.01	4,511,780.85	67,314,486.61
10		17	563,856.26	1,926,324.48	332,902.06		839.12	2,823,921.92	12,838,419.54
11		21	359,326.47					359,326.47	14,597,031.36
12		22	281,257.19					281,257.19	7,979,793.30
13		23	281,257.19					281,257.19	7,569,455.60
14		24	229,211.01					229,211.01	4,803,109.30
15		25	307,280.29					307,280.29	7,364,239.13
16		26	229,211.01					229,211.01	5,253,044.11
17		27	255,234.10					255,234.10	8,293,812.14
18		28	281,257.19					281,257.19	12,013,665.80

19		29	359,326.47						359,326.47	10,312,909.87
20		30	307,280.29						307,280.29	7,575,214.18
21		31	281,257.19						281,257.19	7,690,229.27
22		32	229,211.01						229,211.01	6,411,520.19
23		33	177,164.82						177,164.82	4,374,264.13
24		34	255,234.10						255,234.10	9,008,598.12
25		35	281,257.19						281,257.19	7,857,070.44
26		36	307,280.29						307,280.29	6,715,938.66
27		37	203,187.91						203,187.91	5,264,672.72
28		38	437,395.75						437,395.75	13,096,195.65
29		39	281,257.19						281,257.19	8,616,400.81
30		40	229,211.01						229,211.01	6,195,675.75
31		41	281,257.19						281,257.19	6,254,568.54
32		42	567,511.22						567,511.22	15,435,617.60
33		43	203,187.91						203,187.91	5,150,548.97
34		44	255,234.10						255,234.10	6,922,508.28
35		45	203,187.91						203,187.91	4,374,426.13
36		46	229,211.01						229,211.01	4,545,051.62
37		47	749,672.87						749,672.87	21,083,947.12
38		48	281,257.19						281,257.19	9,445,098.47
39		49	203,187.91						203,187.91	5,300,435.87

40		50	255,234.10						255,234.10	5,599,692.10
41		51	229,211.01						229,211.01	6,724,225.52
42		52	255,234.10						255,234.10	7,194,212.83
43		53	307,280.29						307,280.29	9,916,456.19
44		54	255,234.10						255,234.10	6,276,194.06
45		55	177,164.82						177,164.82	5,386,902.72
46		56	177,164.82						177,164.82	4,824,727.60
47		57	645,580.50						645,580.50	25,113,513.15
48		58	203,187.91						203,187.91	5,806,187.09
49		59	255,234.10						255,234.10	6,682,881.25
50		60	229,211.01						229,211.01	6,645,687.89
51		61	229,211.01						229,211.01	5,457,337.12
52		62	229,211.01						229,211.01	5,901,959.20
53		63	229,211.01						229,211.01	5,615,698.24
54		64	385,349.56						385,349.56	14,243,879.47
55		65	177,164.82						177,164.82	4,509,253.29
56		66	593,534.31						593,534.31	17,668,771.13
57		67	203,187.91						203,187.91	4,613,597.43
58		68	229,211.01						229,211.01	5,376,273.23
59		69	307,280.29						307,280.29	6,316,903.51
60		70	255,234.10						255,234.10	6,215,602.57

61		71	281,257.19						281,257.19	6,983,080.44
62		72	203,187.91						203,187.91	5,731,659.89
63		73	307,280.29						307,280.29	7,867,365.77
64		74	229,211.01						229,211.01	8,555,871.18
65		75	307,280.29						307,280.29	14,010,667.36
66		76	281,257.19						281,257.19	6,177,649.42
67		77	359,326.47						359,326.47	8,424,693.12
68		78	229,211.01						229,211.01	5,522,619.40
69		79	177,164.82						177,164.82	5,868,511.61
70		80	229,211.01						229,211.01	4,656,726.53
71		81	281,257.19						281,257.19	7,223,043.40
72		82	333,303.38						333,303.38	8,220,732.58
73		83	229,211.01						229,211.01	4,618,580.72
74		84	229,211.01						229,211.01	6,899,661.96
75		85	229,211.01						229,211.01	12,442,209.83
76		86	619,557.40						619,557.40	19,691,962.63
77		87	229,211.01						229,211.01	4,848,233.65
78		88	255,234.10						255,234.10	8,260,402.58
79		89	541,488.12						541,488.12	19,144,688.78
80		90	203,187.91						203,187.91	4,697,925.81
81		91	229,211.01						229,211.01	5,209,255.57

82		92	229,211.01						229,211.01	5,451,423.88
83		93	203,187.91						203,187.91	5,772,494.11
84		94	229,211.01						229,211.01	6,245,850.18
85		95	229,196.01						229,196.01	5,311,637.98
86		96							-	3,222,885.19
			48,662,075.51	19,347,583.44	3,340,909.93	-	21,507.89	-	71,372,076.77	1,124,358,799.43

1		02	1,514,642.12	5,421,023.31	951,148.74	9,500,000.00	1,810.73		17,388,624.89	96,874,808.50
2		03	1,939,419.35	6,741,446.38	1,081,931.69		61,218.22		9,824,015.64	44,273,910.29
3		05	646,114.11	1,425,042.36	249,676.54		529.97		2,321,362.98	9,707,187.07
4		07	700,397.11	2,100,600.39	368,570.13		662.46		3,170,230.10	68,470,535.26
5		16	754,680.11	1,965,179.72	344,791.42		706.62		3,065,357.87	15,599,903.77
6		18	564,689.61	1,422,978.33	249,676.54		441.64		2,237,786.13	14,458,713.45
7		19	401,840.61	474,360.43	83,225.51		176.66		959,603.21	3,373,884.23
8		20	428,982.11	543,972.18	95,114.87		220.82		1,068,289.98	10,420,381.90
			6,950,765.14	20,094,603.10	3,424,135.45	9,500,000.00	65,767.11	-	40,035,270.80	263,179,324.48
			55,612,840.65	39,442,186.54	6,765,045.38	9,500,000.00	87,275.00	-	111,407,347.57	1,387,538,123.90
+			781,434,447.77	305,685,069.54	147,036,107.74	83,004,083.39	69,008,736.85	1,369,678.61	1,387,538,123.90	1,387,538,123.90

(:)

1	-	201	8,869,632.90	33,353,147.94	524,781.49	2,714,712.85	45,462,275.18	22	2,066,467.05
2	-	202	8,590,560.11	2,351,013.53	121,103.42	626,472.20	11,689,149.25	27	432,931.45
3		203	1,857,247.00	265,895.84	40,367.81	208,824.07	2,372,334.72	185	12,823.43
4		204	2,233,331.18	221,773.89	26,911.87	139,216.04	2,621,232.99	242	10,831.54
5		205	1,429,254.92	456,729.74	67,279.68	348,040.11	2,301,304.44	2,089	1,101.63
6		206	1,465,132.92	354,527.79	53,823.74	278,432.09	2,151,916.54	11	195,628.78
7		207	3,827,291.95	265,895.84	40,367.81	208,824.07	4,342,379.67	212	20,482.92
8		208	2,134,560.21	256,177.89	26,911.87	139,216.04	2,556,866.02	5,161	495.42
9		209	1,729,961.83	2,625,885.95	13,455.94	69,608.02	4,438,911.73	436	10,180.99
10		210	625,066.13	797,197.84	209,408.95	309,867.48	1,941,540.40	26	74,674.63
11		211	698,097.33	68,687.87	27,170.76	60,526.36	854,482.31	30	28,482.74
12	/	212	215,158.83	344,187.89	26,911.87	139,216.04	725,474.64	1	725,474.64
13	GIS	213	1,133,774.78	1,328,232.42	989,295.12	2,088,240.65	5,539,542.97	8,279	669.11
14		214	762,143.07	420,905.68	15,031.00	33,205.20	1,231,284.95	192	6,412.94
15	.	215	1,289,339.15	88,008.07	7,218.28	15,946.00	1,400,511.50	856.000	1,636.11
16		216	226,118.28	12,091.07	1,188.89	2,626.40	242,024.64	5	48,404.93
17	/	217	803,286.72	28,500.38	2,802.39	6,190.80	840,780.29	23	36,555.66
18	/	218	1,217,342.69	74,273.72	7,303.20	16,133.60	1,315,053.21	2,685	489.78

19	/	219	1,066,162.86	64,773.59	6,369.07	14,070.00	1,151,375.53	3,724	309.18
20	/	220	590,428.90	103,637.75	480,381.60	22,512.00	1,196,960.25	6,892	173.67
21		221	564,748.05	116,592.47	11,464.32	25,326.00	718,130.85	1,614	444.94
22	/	222	105,675.52	6,909.18	679.37	1,500.80	114,764.87	43	2,668.95
23		223	128,268.16	81,182.90	7,982.56	17,634.40	235,068.03	5	47,013.61
24	.	224	2,832,404.62	2,377,959.65	28,533.42	463,033.60	5,701,931.29	423	13,479.74
25		225	143,893.07	104,024.92	9,426.22	20,823.60	278,167.81	423	657.61
26		226	335,609.24	38,864.16	3,821.44	8,442.00	386,736.84	372	1,039.62
27		227	742,732.23	311,985.49	227,333.24	102,205.21	1,384,256.17	2,131.000	649.58
28	.	228	538,464.37	24,182.14	2,377.79	5,252.80	570,277.10	1,354	421.18
29	/	229	394,408.11	29,364.03	2,887.31	6,378.40	433,037.85	32,437	13.35
30		230	528,363.55	33,682.27	3,311.91	7,316.40	572,674.13	44,000	13.02
31	/	231	227,283.40	58,728.06	5,774.62	12,756.80	304,542.88	901	338.01
32	/	232	174,120.95	29,364.03	2,887.31	6,378.40	212,750.69	100.00	2,127.51
33		337	4,949,954.03	6,856,646.63	492,626.12	1,088,267.63	13,387,494.41	13.00	1,029,807.26
34	/	233	2,546,418.15	2,004,794.47	245,845.49	362,493.27	5,159,551.38	461	11,192.09
35	/	234	6,648,188.22	1,891,527.08	636,481.47	530,204.87	9,706,401.65	707	13,729.00
36		235	5,428,884.57	1,672,414.80	419,536.65	194,661.83	7,715,497.85	3,459	2,230.56
37	/	236	1,367,012.11	1,418,762.55	220,277.66	330,099.66	3,336,151.98	7	476,593.14
38		237	898,479.86	323,563.38	127,991.49	60,526.36	1,410,561.08	25	56,422.44
39		238	279,864.71	239,573.27	94,767.64	60,526.36	674,731.97	2	337,365.99

40		239	3,498,297.33	812,109.86	321,245.10	60,526.36	4,692,178.65	24	195,507.44
41		240	450,783.05	49,435.62	19,555.17	60,526.36	580,300.19	1	580,300.19
42		241	1,026,780.82	49,435.62	19,555.17	60,526.36	1,156,297.96	18	64,238.78
43		242	547,918.72	96,265.41	38,079.57	60,526.36	742,790.06	29	25,613.45
44		345	188,635.87	49,435.62	19,555.17	60,526.36	318,153.02	1	318,153.02
45	1	346	149,285.87	49,435.62	19,555.17	60,526.36	278,803.02	1	278,803.02
46		347	154,935.87	49,435.62	19,555.17	60,526.36	284,453.02	38	7,485.61
47		348	735,234.26	748,804.13	296,203.34	67,251.51	1,847,493.24	2,106	877.25
48		243	1,597,008.29	427,740.68	192,882.87	176,446.31	2,394,078.15	88	27,205.43
49		244	1,049,522.07	685,817.35	385,765.75	352,892.61	2,473,997.78	38	65,105.20
50		245	1,431,225.10	106,011.61	17,534.81	16,040.57	1,570,812.08	1,230	1,277.08
51		246	1,756,376.73	316,153.64	105,208.84	96,243.44	2,273,982.65	1,015	2,240.38
52		247	13,366,655.24	1,836,282.42	1,052,088.40	962,434.39	17,217,460.45	479	35,944.59
53		248	7,243,254.98	7,382.19	614,707.74	61,123.03	7,926,467.94	69	114,876.35
54		249	12,678,466.58	11,243.65	936,247.17	93,095.08	13,719,052.47	3,687	3,720.93
55		250	13,548,891.88	17,360.32	1,445,576.43	143,739.88	15,155,568.51	804,498	18.84
56		251	15,433,381.66	26,673.25	2,221,053.88	220,848.93	17,901,957.72	1,188,520	15,062.40
57	Wirecut	252	6,522,008.61	18,950.34	1,577,975.02	156,904.84	8,275,838.80	96	86,206.65
58		253	55,211,147.57	80,636.27	9,743,618.37	667,651.58	65,703,053.79	1,042,909	63.00
59		254	21,087,161.44	337,740.26	2,323,626.74	2,025,279.58	25,773,808.02	265,903	96,929.36
60		255	18,870,976.35	289,491.65	716,965.80	1,735,953.92	21,613,387.72	1,755,264	12,313.47

61	-	256	22,139,296.97	723,729.12	1,792,414.51	4,339,884.81	28,995,325.41	408.597		70,963.14
62		257	13,467,277.96	258,605.91	637,302.94	1,543,070.15	15,906,256.95	5,383.839		2,954.45
63		258	748,073.12	3,098.81	52,065.45	87,798.73	891,036.11	3,850		231.44
64		259	3,761,971.53	1,936.76	32,540.91	54,874.20	3,851,323.40	2,590		1,487.00
65		260	2,188,368.80	1,549.41	26,032.73	43,899.36	2,259,850.30	680		3,323.31
66	.5	261	3,367,221.43	1,162.06	19,524.54	32,924.52	3,420,832.55	4		855,208.14
67		262	19,716,355.01	109,749.64	1,843,984.77	3,109,538.27	24,779,627.70	914,570		27.09
68		263	2,915,371.23	8,005.27	134,502.42	226,813.38	3,284,692.29	183		17,949.14
69		264	3,977,646.07	1,162.06	19,524.54	32,924.52	4,031,257.19	605,568		6.66
70		265	2,729,172.12	1,420.29	23,863.33	40,241.08	2,794,696.83	212,811		13.13
71		266	985,615.97	1,032.94	870,657.04	29,266.24	1,886,572.19	1,022,879		1.84
72		267	23,949,023.27	3,082,142.08	1,648,889.96	1,494,798.84	30,174,854.15	697,877		43.24
73		268	3,832,663.99	203,055.08	108,399.25	98,269.18	4,242,387.50	1,585,459		2.68
74		269	833,394.75	205,924.87	109,926.00	99,653.26	1,248,898.87	2,804,135		0.45
75		270	1,333,901.19	205,897.32	110,307.68	99,999.27	1,750,105.47	898,028		1.95
76		271	2,709,717.45	416,781.77	223,287.18	202,420.68	3,552,207.08	138		25,740.63
77		272	2,133,901.19	205,897.32	110,307.68	99,999.27	2,550,105.47	526		4,848.11
78		273	2,833,901.19	205,897.32	110,307.68	99,999.27	3,250,105.47	1,052		3,089.45
79		275	813,400.32	156,738.44	83,971.25	76,124.02	1,130,234.02	7		161,462.00
80		276	470,100.48	235,107.67	125,956.87	114,186.02	945,351.04	9		105,039.00
81		330	1,208,948.52	233,682.77	125,193.50	113,493.99	1,681,318.78	5		336,263.76

82		331	1,422,092.60	254,343.75	136,262.43	123,528.52	1,936,227.29	20	96,811.36
83		332	350,436.45	111,854.25	59,924.94	54,324.87	576,540.51	6	96,090.08
84		333	3,096,115.10	223,708.51	119,849.87	108,649.73	3,548,323.21	48,061,065	0.07
85		278	2,309,166.75	167,425.16	89,696.56	81,314.29	2,647,602.76	91,250	29.01
86		279	662,329.67	167,425.16	89,696.56	81,314.29	1,000,765.68	1,123,505	0.89
87		338	1,346,022.32	391,133.66	1,545,078.47	189,964.02	3,472,198.47	1	3,472,198.47
88		339	1,584,258.04	267,167.80	143,132.81	129,756.84	2,124,315.50	540	3,933.92
89		342					0.00		
90		343	624,107.45	110,429.36	59,161.56	53,632.83	847,331.20	274	3,092.45
91		344	380,522.09	285,691.44	153,056.68	138,753.32	958,023.53	725	1,321.41
92		280	12,416,485.38	1,105,744.54	11,846,404.76	4,172,877.58	29,541,512.27	6,274	4,708.56
93		281	25,403,455.05	7,756,615.30	1,714,730.41	4,878,056.78	39,752,857.54	110,628	359.34
94		282	16,126,327.37	4,659,548.04	1,435,094.27	4,161,574.82	26,382,544.51	42,777	616.75
95		283	10,131,974.85	4,041,996.66	841,305.69	2,358,249.59	17,373,526.79	705	24,643.30
96		284	25,758,947.40	14,098,529.46	388,995.31	1,141,325.89	41,387,798.05	3,894	10,628.61
97		285	5,953,800.37	1,325,666.85	330,148.45	852,609.23	8,462,224.90	1,298	6,519.43
98		286	6,635,700.78	640,257.34	384,414.03	1,132,538.06	8,792,910.21	196	44,861.79
99		287	25,290,733.37	8,013,100.83	1,629,232.79	4,486,692.76	39,419,759.75	18,568	2,122.99
100		288	23,330,294.02	5,282,780.25	1,230,212.87	3,671,044.19	33,514,331.33	16,993	1,972.24
101		289	4,016,165.37	823,583.14	309,974.32	900,748.54	6,050,471.36	318	19,026.64
102		290	16,121,832.20	3,423,519.19	838,288.94	2,504,597.10	22,888,237.44	20,942	1,092.93

103	GIS	291	9,096,821.50	1,359,561.34	769,054.99	2,198,412.19	13,423,850.01	10,975	1,223.13
104		292	2,460,885.37	747,649.73	409,445.97	1,097,739.54	4,715,720.61	1,123	4,199.22
105		293	2,775,000.41	1,426,469.56	316,064.45	893,123.71	5,410,658.13	553	9,784.19
106		294	2,787,649.17	752,689.87	177,281.91	526,603.77	4,244,224.72	3,129	1,356.42
107		295	32,153,089.75	11,948,498.15	1,456,925.52	4,113,890.73	49,672,404.16	1,452.074	34,207.90
108	/	296	9,229,384.33	5,027,691.15	450,561.78	1,368,091.67	16,075,728.93	42,001	382.75
109	/	297	15,171,270.21	1,709,232.36	351,764.57	944,550.16	18,176,817.30	1,518	11,974.19
110	- HUB	298	43,032,671.39	8,071,739.87	1,603,763.93	7,158,112.85	59,866,288.03	771	77,640.33
	-	2981	2,365,435.07	1,297,995.22	325,849.89	883,553.90	4,872,834.08	563,991	8.64
111	/	299	23,592,374.17	12,497,845.85	2,098,117.53	5,663,168.65	43,851,506.20	1,618,716	27.09
112		300	27,279,639.77	12,351,215.12	2,744,039.54	7,366,823.54	49,741,717.97	2,866,708	17.35
113	/	301	12,968,621.51	4,796,915.54	516,297.90	1,727,070.56	20,008,905.51	1,023,804	19.54
114		302	6,617,664.99	1,272,409.11	255,870.72	895,884.91	9,041,829.72	2,431	3,719.39
115		303	1,358,675.53	1,032,223.20	324,360.43	922,604.28	3,637,863.45	1,095	3,322.25
116		304	1,790,641.84	368,026.09	54,409.94	224,023.59	2,437,101.45	457	5,332.83
117		305	18,716,947.19	3,257,696.11	851,591.44	2,706,364.24	25,532,598.99	76,602	333.32
118	/	349	1,181,817.33	659,527.22	163,855.71	373,408.53	2,378,608.79	35,208	67.56
			757,801,291.64	195,157,990.34	71,741,524.67	100,270,457.75	1,124,971,264.40		

119		307	5,195,207.59	3,929,818.46	265,026.99	496,189.46	9,886,242.49	3,225		3,065.50
120		308	35,200,708.99	33,113,871.12	912,483.89	1,708,372.74	70,935,436.73	211,508	/	335.38
121		309	3,827,351.49	2,632,862.54	643,224.19	317,842.85	7,421,281.07	140		53,009.15
122		310	5,278,396.62	1,067,966.94	43,869.42	82,133.30	6,472,366.28	77,918	-	83.07
			7,433,981.41	2,067,292.45	654,980.51	570,515.46	10,726,769.83	1		10,726,769.83
123	-	311	2,200,769.20	741,666.08	154,291.00	205,385.57	3,302,111.85	5,390		612.64
124	-	312	3,198,495.14	743,973.48	158,576.86	211,090.72	4,312,136.20	27,872		154.71
125	-	313	2,034,717.07	581,652.89	342,112.65	154,039.18	3,112,521.78	5,187		600.06
126		314	907,843.33	765,665.59	23,362.93	1,721,231.49	3,418,103.34	14		244,150.24
127		315	2,064,800.96	144,612.40	1,815.05	133,721.17	2,344,949.57	8		293,118.70
128		316	1,733,735.41	1,225,206.77	263,246.87	2,708,710.91	5,930,899.97	3,098	/	1,914.43
129		317	1,297,537.08	1,655,686.64	52,077.94	3,836,769.00	6,842,070.66	270	/	25,341.00
130		334	8,834,851.58	9,486,124.50	345,557.35	22,958,453.82	41,624,987.25	4,410		9,438.77
	-	3341	5,451,186.70	4,862,552.93	231,581.60	14,561,450.00	25,106,771.23	4,410		5,693.15
	-	3342	3,383,664.87	4,623,571.57	113,975.75	8,397,003.83	16,518,216.02	3		5,506,072.01
125		335	3,107,992.05	1,715,390.39	5,817.46	2,928,593.50	7,757,793.40	2		3,878,896.70
126	-	319	3,948,573.81	978,206.74	127,663.88	167,202.34	5,221,646.78	300		17,405.49
127	-	320	4,370,113.42	821,578.25	155,416.90	203,550.68	5,550,659.24	500		11,101.32
128	-	321	2,499,539.86	1,435,303.19	576,069.97	356,213.69	4,867,126.70	400		12,167.82

129		322	15,151,528.23	2,893,766.28	1,006,504.28	2,041,226.71	21,093,025.50	27,056		779.61
130		323	6,644,912.30	802,752.12	468,444.77	907,211.87	8,823,321.06	584		15,108.43
131		324	3,902,021.09	2,694,129.68	712,151.91	3,946,034.62	11,254,337.30	209,381		53.75
132		336	1,072,624.49	706,839.60	529,027.13	665,625.72	2,974,116.95	1,536		1,936.27
133		325	2,556,681.58	7,425,543.67	261,379.37	200,513.81	10,444,118.43	1		10,444,118.43
134		326	1,104,373.16	37,294.08	1,531.95	2,868.15	1,146,067.34	1		1,146,067.34
135		327	2,161,948.88	864,667.57	184,456.99	162,810.79	3,373,884.23	760		4,439.32
136		328	9,941,152.62	3,263,853.77	602,791.06	649,857.89	14,457,655.34	451		32,056.89
			128,235,875.94	79,728,432.77	7,836,900.80	46,765,649.99	262,566,859.49			
			886,037,167.58	274,886,423.11	79,578,425.47	147,036,107.74	1,387,538,123.89			

. . 2556

4

(:)

1.	410,281,220.19	185,059,023.29	37,013,204.30	79,210,866.64	711,564,314.42	4,667.460		152,452.15
2.	256,628,525.29	25,950,206.22	25,545,934.24	28,758,649.18	336,883,314.93	2,298.145		146,589.23
3.	47,579,009.67	4,785,686.51	3,424,561.53	7,661,997.56	63,451,255.27	7,120		8,911.69
4.	171,548,412.43	59,091,507.09	13,594,725.40	31,404,594.36	275,639,239.28	5,287,000.000		52.14
	886,037,167.58	274,886,423.11	79,578,425.47	147,036,107.74	1,387,538,123.90			

(:)

1		1	10,451,827.30	4,891,116.01	266,580.65	1,104,276.42	16,713,800.38	5,161	3,238.48
2	/	2	28,049,109.53	39,140,401.62	1,077,082.57	5,152,021.61	73,418,615.33	2,089	35,145.34
3	GIS	3	1,769,988.41	1,677,974.53	1,029,028.41	2,225,093.71	6,702,085.06	8,279	809.53
4	/	4	1,467,697.62	829,883.14	323,978.47	486,800.83	3,108,360.06	26	119,552.31
5		5	1,610,501.07	354,487.00	52,678.17	171,377.73	2,189,043.96	30	72,968.13
6		6	6,590,260.04	1,178,904.35	560,823.77	220,774.98	8,550,763.14	14,354	595.71
7		7	2,613,906.75	1,431,057.40	352,013.19	457,479.92	4,854,457.26	2,131	2,278.02
8		8	9,179,840.41	9,295,394.49	753,238.11	1,834,836.22	21,063,309.23	13	1,620,254.56
9		9	5,047,869.08	2,802,989.36	72,324.36	576,177.17	8,499,359.97	1,657	5,129.37
10		10	980,521.05	307,343.47	30,254.18	73,697.09	1,391,815.79	1,777	783.24
11	/	11	4,195,278.14	2,657,982.71	379,601.89	802,050.60	8,034,913.34	461	17,429.31
12	/	12	8,394,962.00	3,654,089.11	832,271.87	1,173,899.70	14,055,222.68	707	19,880.09
13	/	13	6,597,184.10	2,328,969.33	491,943.74	433,682.39	9,851,779.56	3,459	2,848.16
14	/	14	3,351,539.55	2,534,573.90	343,198.76	736,120.41	6,965,432.62	7	995,061.80
15		15	1,810,883.60	559,362.51	153,498.90	151,377.73	2,675,122.73	25	107,004.91
16		16	792,268.45	475,372.40	120,275.05	151,377.73	1,539,293.63	2	769,646.82
17	/	17	3,910,701.07	1,047,908.99	346,752.51	151,377.73	5,456,740.30	24	227,364.18
18		18	2,492,216.03	2,055,704.25	135,187.76	634,133.20	5,317,241.24	3	1,772,413.75
19		19	1,439,184.56	285,234.75	45,062.58	151,377.73	1,920,859.62	18	106,714.42
20		20	1,160,322.46	932,064.54	63,586.98	151,377.73	2,307,351.71	29	79,563.85
21		48	601,039.62	285,234.75	45,062.58	151,377.73	1,082,714.68	1	1,082,714.68

(:)

22		49	1,193,460.64	1,010,803.17	324,544.91	168,197.48	2,697,006.20	2,106	1,280.63
23		21	1,990,794.45	822,969.49	224,946.77	538,085.11	3,576,795.82	88.0	40,645.41
24		22	1,537,094.37	1,176,274.99	449,893.54	1,076,170.21	4,239,433.11	38.0	111,564.03
25		23	3,585,205.66	141,941.50	20,449.71	48,916.83	3,796,513.70	1,230.0	3,086.60
26	/	24	2,080,260.09	531,733.00	122,698.24	293,500.97	3,028,192.30	1,015.0	2,983.44
27		25	15,605,488.80	3,992,075.96	1,226,982.38	2,935,009.68	23,759,556.82	479.0	49,602.42
28		26	5,846,956.60	1,748,602.28	3,583,462.33	1,018,688.94	12,197,710.15	1,186.341	10,281.79
29		27	118,013,628.94	5,313,604.03	13,918,444.24	3,095,563.65	140,341,240.86	1,042,909	134.57
30		28	85,276,037.04	8,159,152.44	5,987,228.12	15,727,309.19	115,149,726.79	7,819.603	14,725.78
31		29	12,496,987.75	1,787,141.19	154,275.58	459,719.85	14,898,124.37	7,120	2,092.43
32		30	26,188,289.75	2,564,546.10	2,344,988.79	6,987,741.78	38,085,566.42	914,570	41.64
33		31	8,893,732.17	433,999.22	925,297.16	214,535.93	10,467,564.48	1,841,258	5.69
34		32	10,210,214.92	2,017,344.24	694,153.00	788,829.04	13,710,541.20	77	178,058.98
35		33	29,862,890.70	4,755,154.71	2,254,076.16	2,561,511.28	39,433,632.85	28	1,408,344.03
36		34	12,172,350.27	1,786,797.24	614,321.13	698,108.85	15,271,577.49	76	200,941.81
37		35	3,833,518.48	1,363,506.34	1,804,704.33	533,163.05	7,534,892.20	17	443,228.95
38		47	1,470,057.56	689,817.59	237,361.05	269,734.90	2,666,971.10	999	2,669.64
39		36	129,294,418.40	47,963,164.17	17,919,156.93	25,152,671.04	220,329,410.54	160,384	1,373.76
40		37	34,246,886.01	13,307,610.53	1,584,111.26	4,989,311.38	54,127,919.18	1,452.07	37,276.28
41		38	118,240,510.93	37,386,401.88	7,665,976.05	27,018,315.58	190,311,204.44	70,413	2,702.79
42	-	42	47,491,902.71	10,728,847.47	2,056,799.55	8,917,087.40	69,194,637.13	772	89,672.69
43	/	43	73,455,358.23	33,723,313.63	5,740,012.18	17,383,324.70	130,302,008.74	5,509,228	23.65

(:)

44	/	44	11,963,933.04	5,022,857.06	834,602.62	3,569,330.49	21,390,723.21	3,526	6,066.57
45		45	2,684,438.09	1,677,138.46	181,595.67	1,099,444.24	5,642,616.46	457	12,347.08
46		46	22,620,037.56	6,036,938.22	942,857.82	3,252,318.64	32,852,152.24	76,602	428.87
47	/	50	3,275,613.58	2,018,639.60	291,041.44	1,248,829.17	6,834,123.79	34,473	198.25
			886,037,167.58	274,886,423.11	79,578,425.47	147,036,107.74	1,387,538,123.89		

. . 2556

6

(:)

1.	410,281,220.19	185,059,023.29	37,013,204.30	79,210,866.64	711,564,314.42	4,667.460		152,452.15
2.	256,628,525.29	25,950,206.22	25,545,934.24	28,758,649.18	336,883,314.93	2,298.145		146,589.23
3.	47,579,009.67	4,785,686.51	3,424,561.53	7,661,997.56	63,451,255.27	7,120		8,911.69
4.	171,548,412.43	59,091,507.09	13,594,725.40	31,404,594.36	275,639,239.28	5,287,000		52.14
	886,037,167.58	274,886,423.11	79,578,425.47	147,036,107.74	1,387,538,123.90			



การจัดทำต้นทุนต่อหน่วยผลผลิต ประจำปีงบประมาณ พ.ศ.๒๕๕๗

ขั้นตอนที่ ๓

สรุปผลการเปรียบเทียบและวิเคราะห์ผลการคำนวณต้นทุนต่อหน่วยผลผลิต

ระหว่างปีงบประมาณ พ.ศ.๒๕๕๕ กับ พ.ศ.๒๕๕๖

สำนักงานคลัง
กุมภาพันธ์ ๒๕๕๗

. 2555 (. . 54 - . . 55)										. 2556 (. . 55 - . . 56)												
																				() %	() %	() %
1	-	201	7,200,613.90	404,285.79	116,907.95	322,117.15	8,043,924.80	22		365,632.95	8,869,632.90	33,353,147.94	524,781.49	2,714,712.85	45,462,275.18	22	2,066,467.05	465.2	0.0	465.2		
2	-	202	6,819,776.01	3,011,313.57	114,331.24	490,548.11	10,435,968.94	24		434,832.04	8,590,560.11	2,351,013.53	121,103.42	626,472.20	11,689,149.25	27	432,931.45	12.0	12.5	(0.4)		
3		203	856,535.86	539,047.73	155,877.27	429,489.53	1,980,950.39	130		15,238.08	1,857,247.00	265,895.84	40,367.81	208,824.07	2,372,334.72	185	12,823.43	19.8	42.3	(15.8)		
4		204	934,072.80	1,167,935.76	136,392.61	375,803.34	2,614,204.52	199		13,136.71	2,233,331.18	221,773.89	26,911.87	139,216.04	2,621,232.99	242	10,831.54	0.3	21.6	(17.5)		
5		205	1,690,973.40	875,952.56	253,300.56	697,920.49	3,518,147.00	3,342		1,052.71	1,429,254.92	456,729.74	67,279.68	348,040.11	2,301,304.44	2,089	1,101.63	(34.6)	(37.5)	4.6		
6		206	4,247,592.04	1,473,809.66	394,846.58	736,861.92	6,853,110.20	32		214,159.69	1,465,132.92	354,527.79	53,823.74	278,432.09	2,151,916.54	11	195,628.78	(68.6)	(65.6)	(8.7)		
7		207	2,976,635.76	739,047.73	55,877.27	329,489.53	4,101,050.29	164		25,006.40	3,827,291.95	265,895.84	40,367.81	208,824.07	4,342,379.67	212	20,482.92	5.9	29.3	(18.1)		
8		208	1,119,108.34	107,040.76	136,392.61	375,803.34	1,738,345.06	3,007		578.10	2,134,560.21	256,177.89	26,911.87	139,216.04	2,556,866.02	5,161	495.42	47.1	71.6	(14.3)		
9		209	930,171.77	587,001.73	155,877.27	429,489.53	2,102,540.30	30		70,084.68	1,729,961.83	2,625,885.95	13,455.94	69,608.02	4,438,911.73	436	10,180.99	111.1	1,353.3	(85.5)		
10		210	2,128,497.33	499,361.66	252,215.32	213,975.49	3,094,049.81	44		70,319.31	625,066.13	797,197.84	209,408.95	309,867.48	1,941,540.40	26	74,674.63	(37.2)	(40.9)	6.2		
11		211	628,175.61	145,911.71	76,394.08	97,348.15	947,829.56	30		31,594.32	698,097.33	68,687.87	27,170.76	60,526.36	854,482.31	30	28,482.74	(9.8)	0.0	(9.8)		
12	/	212	1,423,313.25	673,809.66	194,846.58	536,861.92	2,828,831.41	4		707,207.85	215,158.83	344,187.89	26,911.87	139,216.04	725,474.64	1	725,474.64	(74.4)	(75.0)	2.6		
13	GIS	213	3,947,185.97	853,497.59	233,815.90	644,234.30	5,678,733.76	132,863		42.74	1,133,774.78	1,328,232.42	989,295.12	2,088,240.65	5,539,542.97	8,279	669.11	(2.5)	(93.8)	1,465.5		
14		214	499,544.85	917,338.83	13,984.80	16,268.51	1,447,136.98	210		6,891.13	762,143.07	420,905.68	15,031.00	33,205.20	1,231,284.95	192	6,412.94	(14.9)	(8.6)	(6.9)		
15		215	1,092,895.98	384,325.22	5,520.31	6,421.78	1,489,163.29	1,859		801.06	1,289,339.15	88,008.07	7,218.28	15,946.00	1,400,511.50	856	1,636.11	(6.0)	(54.0)	104.2		
16		216	96,849.16	124,790.22	5,520.31	6,421.78	233,581.47	10		23,358.15	226,118.28	12,091.07	1,188.89	2,626.40	242,024.64	5	48,404.93	3.6	(50.0)	107.2		
17	/	217	1,023,630.85	524,398.22	5,520.31	6,421.78	1,559,971.16	38		41,051.87	803,286.72	28,500.38	2,802.39	6,190.80	840,780.29	23	36,555.66	(46.1)	(39.5)	(11.0)		
18	/	218	1,051,433.69	44,458.98	10,059.24	11,701.91	1,117,653.82	2,290		488.06	1,217,342.69	74,273.72	7,303.20	16,133.60	1,315,053.21	2,685	489.78	17.7	17.2	0.4		
19	/	219	631,947.66	24,398.22	5,520.31	6,421.78	668,287.97	1,881		355.28	1,066,162.86	64,773.59	6,369.07	14,070.00	1,151,375.53	3,724	309.18	72.3	98.0	(13.0)		
20	/	220	1,189,712.85	24,398.22	5,520.31	6,421.78	1,226,053.16	7,896.0		155.28	590,428.90	103,637.75	480,381.60	22,512.00	1,196,960.25	6,892.0	173.67	(2.4)	(12.7)	11.8		
21		221	661,066.98	24,398.22	5,520.31	6,421.78	697,407.29	4,397		158.61	564,748.05	116,592.47	11,464.32	25,326.00	718,130.85	1,614	444.94	3.0	(63.3)	180.5		
22	/	222	92,910.48	24,398.22	5,520.31	6,421.78	129,250.79	41		3,152.46	105,675.52	6,909.18	679.37	1,500.80	114,764.87	43	2,668.95	(11.2)	4.9	(15.3)		
23		223	314,509.58	56,387.00	12,758.06	14,841.44	398,496.09	8		49,812.01	128,268.16	81,182.90	7,982.56	17,634.40	235,068.03	5	47,013.61	(41.0)	(37.5)	(5.6)		
24		224	381,179.36	293,863.02	66,489.12	77,346.76	818,878.26	5		163,775.65	2,832,404.62	2,377,959.65	28,533.42	463,033.60	5,701,931.29	423	13,479.74	596.3	8,360.0	(91.8)		
25		225	484,310.08	5,421.83	1,226.74	1,427.06	492,385.70	846		582.02	143,893.07	104,024.92	9,426.22	20,823.60	278,167.81	423	657.61	(43.5)	(50.0)	13.0		
26		226	509,737.09	24,398.22	5,520.31	6,421.78	546,077.39	447		1,221.65	335,609.24	38,864.16	3,821.44	8,442.00	386,736.84	372	1,039.62	(29.2)	(16.8)	(14.9)		
27		227	683,644.27	167,321.89	263,134.98	306,104.80	1,420,205.95	1,856,000		765.20	742,732.23	311,985.49	227,333.24	102,205.21	1,384,256.17	2,131,000	649.58	(2.5)	14.8	(15.1)		
28		228	329,234.26	21,687.31	4,906.95	5,708.25	361,536.77	900		401.71	538,464.37	24,182.14	2,377.79	5,252.80	570,277.10	1,354	421.18	57.7	50.4	4.8		
29	/	229	157,460.27	110,128.50	70,169.33	81,627.95	419,386.05	26,340		15.92	394,408.11	29,364.03	2,887.31	6,378.40	433,037.85	32,437	13.35	3.3	23.1	(16.2)		
30		230	491,155.63	24,398.22	5,520.31	6,421.78	527,495.94	34,040		15.50	528,363.55	33,682.27	3,311.91	7,316.40	572,674.13	44,000	13.02	8.6	29.3	(16.0)		
31	/	231	249,285.70	24,398.22	5,520.31	6,421.78	285,626.01	997		286.49	227,283.40	58,728.06	5,774.62	12,756.80	304,542.88	901	338.01	6.6	(9.6)	18.0		
32	/	232	288,564.61	24,398.22	5,520.31	6,421.78	324,904.92	134		2,424.66	174,120.95	29,364.03	2,887.31	6,378.40	212,750.69	100	2,127.51	(34.5)	(25.4)	(12.3)		
33		337	2,832,254.10	4,396,709.20	723,283.85	841,395.76	8,793,642.90	12		732,803.58	4,949,954.03	6,856,646.63	492,626.12	1,088,267.63	13,387,494.41	13	1,029,807.26	52.2	8.3	40.5		
34	/	233	2,219,298.27	1,479,384.17	679,575.73	574,177.94	4,952,436.11	518		9,560.69	2,546,418.15	2,004,794.47	245,845.49	362,493.27	5,159,551.38	461	11,192.09	4.2	(11.0)	17.1		
35	/	234	6,364,074.49	828,787.45	427,068.69	362,698.88	7,982,629.51	566		14,103.59	6,648,188.22	1,891,527.08	636,481.47	530,204.87	9,706,401.65	707	13,729.00	21.6	24.9	(2.7)		
36		235	3,379,816.59	1,226,391.06	506,737.95	425,522.21	5,538,467.81	2,787		1,987.25	5,428,884.57	1,672,414.80	419,536.65	194,661.83	7,715,497.85	3,459	2,230.56	39.3	24.1	12.2		

. 2555 (. . 54 - . . 55)									. 2556 (. . 55 - . . 56)											
																		() %	() %	() %
37	/	236	3,488,488.68	117,921.29	49,753.51	41,769.47	3,697,932.94	7	528,276.13	1,367,012.11	1,418,762.55	220,277.66	330,099.66	3,336,151.98	7	476,593.14	(9.8)	0.0	(9.8)	
38		237	592,544.93	137,635.47	72,060.94	97,348.15	899,589.50	14	64,256.39	898,479.86	323,563.38	127,991.49	60,526.36	1,410,561.08	25	56,422.44	56.8	78.6	(12.2)	
39		238	519,602.88	120,692.60	63,190.27	97,348.15	800,833.90	2	400,416.95	279,864.71	239,573.27	94,767.64	60,526.36	674,731.97	2	337,365.99	(15.7)	0.0	(15.7)	
40		239	3,353,586.51	778,966.17	407,838.45	97,348.16	4,637,739.30	21	220,844.73	3,498,297.33	812,109.86	321,245.10	60,526.36	4,692,178.65	24	195,507.44	1.2	14.3	(11.5)	
41		240	369,573.20	53,748.62	28,140.83	32,449.39	483,912.05	1	483,912.05	450,783.05	49,435.62	19,555.17	60,526.36	580,300.19	1	580,300.19	19.9	0.0	19.9	
42		241	665,387.52	156,841.77	82,116.66	97,348.16	1,001,694.11	13	77,053.39	1,026,780.82	49,435.62	19,555.17	60,526.36	1,156,297.96	18	64,238.78	15.4	38.5	(16.6)	
43		242	640,823.13	177,049.96	92,696.94	97,348.16	1,007,918.18	33	30,542.98	547,918.72	96,265.41	38,079.57	60,526.36	742,790.06	29	25,613.45	(26.3)	(12.1)	(16.1)	
44		345	289,573.23	36,774.62	19,253.86	0.00	345,601.71	1	345,601.71	188,635.87	49,435.62	19,555.17	60,526.36	318,153.02	1	318,153.02	(7.9)	0.0	(7.9)	
45	1	346	118,838.37	53,748.62	28,140.83	32,449.39	233,177.22	1	233,177.22	149,285.87	49,435.62	19,555.17	60,526.36	278,803.02	1	278,803.02	19.6	0.0	19.6	
46		347	205,780.29	53,748.62	28,140.83	32,449.39	320,119.14	51	6,276.85	154,935.87	49,435.62	19,555.17	60,526.36	284,453.02	38	7,485.61	(11.1)	(25.5)	19.3	
47		348							735,234.26	748,804.13	296,203.34	67,251.51		1,847,493.24	2,106	877.25	100.0	100.0	100.0	
48		243	702,606.90	65,377.04	67,841.06	59,983.97	895,808.96	38	23,573.92	1,597,008.29	427,740.68	192,882.87	176,446.31	2,394,078.15	88	27,205.43	167.3	131.6	15.4	
49		244	1,390,583.12	332,395.68	305,284.75	269,927.86	2,298,191.41	42	54,718.84	1,049,522.07	685,817.35	385,765.75	352,892.61	2,473,997.78	38	65,105.20	7.6	(9.5)	19.0	
50		245	730,492.86	98,065.56	101,761.58	89,975.95	1,020,295.95	679	1,502.64	1,431,225.10	106,011.61	17,534.81	16,040.57	1,570,812.08	1,230	1,277.08	54.0	81.1	(15.0)	
51		246	1,500,468.07	358,950.94	152,642.38	134,963.93	2,147,025.32	1,149	1,868.60	1,756,376.73	316,153.64	105,208.84	96,243.44	2,273,982.65	1,015	2,240.38	5.9	(11.7)	19.9	
52		247	13,188,489.66	1,029,688.37	1,068,496.63	944,747.50	16,231,422.17	528	30,741.33	13,366,655.24	1,836,282.42	1,052,088.40	962,434.39	17,217,460.45	479	35,944.59	6.1	(9.3)	16.9	
53		248	4,324,624.87	21,585.21	756,680.02	40,428.06	5,143,318.16	50	102,866.36	7,243,254.98	7,382.19	614,707.74	61,123.03	7,926,467.94	69	114,876.35	54.1	38.0	11.7	
54		249	10,897,650.72	34,702.75	1,216,521.85	64,996.58	12,213,871.89	6,231	1,960.18	12,678,466.58	11,243.65	936,247.17	93,095.08	13,719,052.47	3,687	3,720.93	12.3	(40.8)	89.8	
55		250	12,727,101.54	50,610.21	1,774,165.86	94,790.50	14,646,668.11	885,401	16.54	13,548,891.88	17,360.32	1,445,576.43	143,739.88	15,155,568.51	804,498	18.84	3.5	(9.1)	13.9	
56		251	15,685,255.19	79,684.16	2,793,367.52	149,244.61	18,707,551.49	1,479,825	12,641.73	15,433,381.66	26,673.25	2,221,053.88	220,848.93	17,901,957.72	1,188,520	15,062.40	(4.3)	(19.7)	19.1	
57	Wirecut	252	6,270,864.37	59,077.88	2,071,004.05	110,650.03	8,511,596.33	175	48,637.69	6,522,008.61	18,950.34	1,577,975.02	156,904.84	8,275,838.80	96	86,206.65	(2.8)	(45.1)	77.2	
58		253	56,572,745.86	243,800.26	8,546,537.86	456,626.18	65,819,710.16	1,686,914	39.02	55,211,147.57	80,636.27	9,743,618.37	667,651.58	65,703,053.79	1,042,909	63.00	(0.2)	(38.2)	61.5	
59		254	18,098,822.75	340,149.07	1,305,645.75	2,060,457.25	21,805,074.81	265,825	82,027.93	21,087,161.44	337,740.26	2,323,626.74	2,025,279.58	25,773,808.02	265,903	96,929.36	18.2	0.0	18.2	
60		255	14,426,446.72	255,887.55	1,009,699.38	1,593,420.27	17,285,453.92	1,602,539	10,786.29	18,870,976.35	289,491.65	716,965.80	1,735,953.92	21,613,387.72	1,755,264	12,313.47	25.0	9.5	14.2	
61		256	18,698,148.07	641,336.54	2,530,631.60	3,993,624.03	25,863,740.25	405,851	63,727.18	22,139,296.97	723,729.12	1,792,414.51	4,339,884.81	28,995,325.41	408,597	70,963.14	12.1	0.7	11.4	
62		257	11,041,677.26	242,504.92	956,893.26	1,510,086.22	13,751,161.67	5,344,430	2,572.99	13,467,277.96	258,605.91	637,302.94	1,543,070.15	15,906,256.95	5,383,839	2,954.45	15.7	0.7	14.8	
63		258	374,570.32	26,040.64	233,323.94	120,926.92	754,861.82	3,800	198.65	748,073.12	3,098.81	52,065.45	87,798.73	891,036.11	3,850	231.44	18.0	1.3	16.5	
64		259	3,666,028.63	26,040.64	383,323.94	120,926.92	4,196,320.13	2,560	1,639.19	3,761,971.53	1,936.76	32,540.91	54,874.20	3,851,323.40	2,590	1,487.00	(8.2)	1.2	(9.3)	
65		260	2,141,296.52	28,210.69	415,267.60	131,004.16	2,715,778.97	660	4,114.82	2,188,368.80	1,549.41	26,032.73	43,899.36	2,259,850.30	680	3,323.31	(16.8)	3.0	(19.2)	
66		261	2,289,448.49	36,890.91	543,042.25	171,313.13	3,040,694.78	3	1,013,564.93	3,367,221.43	1,162.06	19,524.54	32,924.52	3,420,832.55	4	855,208.14	12.5	33.3	(15.6)	
67		262	5,917,742.05	23,870.59	501,380.28	110,849.67	6,553,842.59	666,438	9.83	19,716,355.01	109,749.64	1,843,984.77	3,109,538.27	24,779,627.70	914,570	27.09	278.1	37.2	175.5	
68		263	1,191,414.95	23,870.59	351,380.28	110,849.67	1,677,515.49	110	15,250.14	2,915,371.23	8,005.27	134,502.42	226,813.38	3,284,692.29	183	17,949.14	95.8	66.4	17.7	
69		264	4,066,031.85	17,360.43	255,549.29	80,617.94	4,419,559.51	582,486	7.59	3,977,646.07	1,162.06	19,524.54	32,924.52	4,031,257.19	605,568	6.66	(8.8)	4.0	(12.3)	
70		265	2,466,403.30	17,360.43	255,549.29	80,617.94	2,819,930.96	231,816	12.16	2,729,172.12	1,420.29	23,863.33	40,241.08	2,794,696.83	212,811	13.13	(0.9)	(8.2)	8.0	
71		266	1,055,371.27	17,360.43	255,549.29	80,617.94	1,408,898.93	887,939	1.59	985,615.97	1,032.94	870,657.04	29,266.24	1,886,572.19	1,022,879	1.84	33.9	15.2	16.2	
72		267	23,990,747.21	622,360.16	1,231,092.43	858,288.52	26,702,488.33	242,100	110.30	23,949,023.27	3,082,142.08	1,648,889.96	1,494,798.84	30,174,854.15	697,877	43.24	13.0	188.3	(60.8)	
73		268	2,522,118.21	122,950.70	256,264.04	178,661.22	3,079,994.17	1,019,565	3.02	3,832,663.99	203,055.08	108,399.25	98,269.18	4,242,387.50	1,585,459	2.68	37.7	55.5	(11.4)	
74		269	1,271,775.70	122,458.90	255,238.98	177,946.58	1,827,420.16	3,639,480	0.50	833,394.75	205,924.87	109,926.00	99,653.26	1,248,898.87	2,804,135	0.45	(31.7)	(23.0)	(11.3)	

. 2555 (. . 54 - . . 55)										. 2556 (. . 55 - . . 56)										
																		I()%	I()%	I()%
112		300	39,107,916.83	12,555,934.31	3,153,390.08	6,898,920.01	61,716,161.23	3,379,619	18.26	27,279,639.77	12,351,215.12	2,744,039.54	7,366,823.54	49,741,717.97	2,866,708	17.35	(19.4)	(15.2)	(5.0)	
113	/	301	8,062,146.82	2,599,244.63	315,289.77	845,736.06	11,822,417.28	283,636	41.68	12,968,621.51	4,796,915.54	516,297.90	1,727,070.56	20,008,905.51	1,023,804	19.54	69.2	261.0	(53.1)	
114		302	3,559,373.74	3,851,363.47	272,125.97	660,192.08	8,343,055.26	2,304	3,621.12	6,617,664.99	1,272,409.11	255,870.72	895,884.91	9,041,829.72	2,431	3,719.39	8.4	5.5	2.7	
115		303	2,377,556.62	1,021,391.94	326,901.42	892,439.44	4,618,289.41	1,620	2,850.80	1,358,675.53	1,032,223.20	324,360.43	922,604.28	3,637,863.45	1,095	3,322.25	(21.2)	(32.4)	16.5	
116		304	1,858,562.12	124,386.78	58,471.98	160,116.89	2,201,537.77	587	3,750.49	1,790,641.84	368,026.09	54,409.94	224,023.59	2,437,101.45	457	5,332.83	10.7	(22.1)	42.2	
117		305	11,645,493.72	4,037,175.76	955,408.51	2,172,733.08	18,810,811.07	65,432	287.49	18,716,947.19	3,257,696.11	851,591.44	2,706,364.24	25,532,598.99	76,602	333.32	35.7	17.1	15.9	
118	/	349					0.00			1,181,817.33	659,527.22	163,855.71	373,408.53	2,378,608.79	35,208	67.56	100.0	100.0	100.0	
			673,542,485.97	157,868,163.28	72,406,036.03	80,362,188.06	984,178,873.33			757,801,291.64	195,157,990.34	71,741,524.67	100,270,457.75	1,124,971,264.40						

. 2555 (. . 54 - . . 55)										. 2556 (. . 55 - . . 56)												
																				() %	() %	() %
119	307	6,402,926.48	1,337,790.17	478,283.58	631,429.06	8,850,429.29	3,223	2,746.02	5,195,207.59	3,929,818.46	265,026.99	496,189.46	9,886,242.49	3,225	3,065.50	11.7	0.1	11.6				
120	308	20,411,558.70	13,744,304.30	852,037.59	1,124,858.38	36,132,758.97	58,014	/	622.83	35,200,708.99	33,113,871.12	912,483.89	1,708,372.74	70,935,436.73	211,508	335.38	96.3	264.6	(46.2)			
121	309	2,798,114.85	4,020,939.49	140,588.23	185,604.31	7,145,246.88	137	52,155.09	3,827,351.49	2,632,862.54	643,224.19	317,842.85	7,421,281.07	140	53,009.15	3.9	2.2	1.6				
122	310	6,365,199.94	1,248,975.54	472,003.71	623,138.38	8,709,317.56	84,262	103.36	5,278,396.62	1,067,966.94	43,869.42	82,133.30	6,472,366.28	77,918	83.07	(25.7)	(7.5)	(19.6)				
		7,009,752.05	1,553,685.45	790,627.25	566,650.40	9,920,715.15	1	9,920,715.15	7,433,981.41	2,067,292.45	654,980.51	570,515.46	10,726,769.83	1	10,726,769.83	8.1	0.0	8.1				
123	311	1,912,082.08	446,814.02	224,063.76	160,588.72	2,743,548.59	3,780	725.81	2,200,769.20	741,666.08	154,291.00	205,385.57	3,302,111.85	5,390	612.64	20.4	42.6	(15.6)				
124	312	3,372,231.07	683,337.87	349,773.50	250,686.14	4,656,028.58	25,055	185.83	3,198,495.14	743,973.48	158,576.86	211,090.72	4,312,136.20	27,872	154.71	(7.4)	11.2	(16.7)				
125	313	1,725,438.90	423,533.56	216,789.99	155,375.54	2,521,137.99	3,465	727.60	2,034,717.07	581,652.89	342,112.65	154,039.18	3,112,521.78	5,187	600.06	23.5	49.7	(17.5)				
126	314	879,553.63	263,965.34	135,836.51	3,388,056.95	4,667,412.43	22	212,155.11	907,843.33	765,665.59	23,362.93	1,721,231.49	3,418,103.34	14	244,150.24	(26.8)	(36.4)	15.1				
127	315	2,111,331.06	565,950.93	6,038.76	239,531.82	2,922,852.57	8	365,356.57	2,064,800.96	144,612.40	1,815.05	133,721.17	2,344,949.57	8	293,118.70	(19.8)	0.0	(19.8)				
128	316	3,281,584.60	587,691.00	63,158.29	2,505,221.04	6,437,654.94	3,577	/	1,799.74	1,733,735.41	1,225,206.77	263,246.87	2,708,710.91	5,930,899.97	3,098	1,914.43	(7.9)	(13.4)	6.4			
129	317	1,015,692.30	1,501,236.56	204,323.12	3,104,629.60	5,825,881.58	274	/	21,262.34	1,297,537.08	1,655,686.64	52,077.94	3,836,769.00	6,842,070.66	270	25,341.00	17.4	(1.5)	19.2			
130	334	8,639,229.56	8,598,004.07	279,203.71	17,574,824.17	35,091,261.50	4,410	7,957.20	8,834,851.58	9,486,124.50	345,557.35	22,958,453.82	41,642,987.25	4,410	9,438.77	18.6	0.0	18.6				
	3341	4,732,177.59	5,729,127.15	239,561.04	11,002,368.23	21,703,234.01	4,410	4,921.37	5,451,186.70	4,862,552.93	231,581.60	14,561,450.00	25,106,771.23	4,410	5,693.15	15.7	0.0	15.7				
	3342	3,907,051.98	2,868,876.91	39,642.66	6,572,455.94	13,388,027.49	2	6,694,013.75	3,383,664.87	4,623,571.57	113,975.75	8,397,003.83	16,518,216.02	3	5,506,072.01	23.4	50.0	(17.7)				
131	335	2,741,083.72	703,609.48	21,881.61	1,367,950.60	4,834,525.41	1	4,834,525.41	3,107,992.05	1,715,390.39	5,817.46	2,928,593.50	7,757,793.40	2	3,878,896.70	60.5	100.0	(19.8)				
132	319	2,095,659.48	461,099.21	235,132.95	99,028.75	3,358,863.85	219	15,337.28	3,948,573.81	978,206.74	127,663.88	167,202.34	5,221,646.78	300	17,405.49	55.5	37.0	13.5				
133	320	7,719,366.42	861,628.17	386,248.81	286,861.09	8,032,765.83	616	13,040.20	4,370,113.42	821,578.25	155,416.90	203,550.68	5,550,659.24	500	11,101.32	(30.9)	(18.8)	(14.9)				
134	321	1,075,155.73	697,181.80	400,935.42	370,756.91	2,031,230.68	143	14,204.41	2,499,539.86	1,435,303.19	576,069.97	356,213.69	4,867,126.70	400	12,167.82	139.6	179.7	(14.3)				
135	322	15,229,373.73	733,008.66	1,006,045.54	1,892,378.90	18,860,806.83	25,879	728.81	15,151,528.23	2,893,766.28	1,006,504.28	2,041,226.71	21,093,025.50	27,056	779.61	11.8	4.5	7.0				
136	323	5,596,766.26	261,093.73	428,379.13	681,256.68	6,967,495.79	537	12,974.85	6,644,912.30	802,752.12	468,444.77	907,211.87	8,823,321.06	584	15,108.43	26.6	8.8	16.4				
137	324	4,971,665.30	2,198,346.90	605,481.73	4,119,465.21	11,894,959.16	211,132	56.34	3,902,021.09	2,694,129.68	712,151.91	3,946,034.62	11,254,337.30	209,381	53.75	(5.4)	(0.8)	(4.6)				
138	336	779,210.57	102,395.76	721,725.21	576,417.08	2,179,748.61	1,268	1,719.04	1,072,624.49	706,839.60	529,027.13	665,625.72	2,974,116.95	1,536	1,936.27	36.4	21.1	12.6				
139	325	2,792,211.26	10,934,882.89	198,393.33	205,276.80	14,130,764.28	1	14,130,764.28	2,556,681.58	7,425,543.67	261,379.37	200,513.81	10,444,118.43	1	10,444,118.43	(26.1)	0.0	(26.1)				
140	326	1,114,519.21	307,009.01	82,853.87	109,383.52	1,613,765.61	1	1,613,765.61	1,104,373.16	37,294.08	1,531.95	2,868.15	1,146,067.34	1	1,146,067.34	(29.0)	0.0	(29.0)				
141	327	2,019,156.86	584,637.56	194,172.44	160,571.40	2,958,538.25	760	3,892.81	2,161,948.88	864,667.57	184,456.99	162,810.79	3,373,884.23	760	4,439.32	14.0	0.0	14.0				
142	328	7,358,829.13	2,276,688.73	488,933.16	969,869.48	11,094,320.50	379	29,272.61	9,941,152.62	3,263,853.77	602,791.06	649,857.89	14,457,655.34	451	32,056.89	30.3	19.0	9.5				
		112,407,940.84	53,544,124.74	8,192,283.94	40,783,160.54	214,927,510.06			128,235,875.94	79,728,432.77	7,836,900.80	46,765,649.99	262,566,859.49									
		785,950,426.81	211,412,288.02	80,598,319.97	121,145,348.59	1,199,106,383.39			886,037,167.58	274,886,423.11	79,578,425.47	147,036,107.74	1,387,538,123.90									

2555				2556	100%	2556	
	337						
		732,803.58 /		2555	1,029,807.26 /	2556	297,003.68 /
40.5		2556	3.323				
	348						
		2556	.				
	249						
		1,960.18 /	2555	3,720.93 /	2556	1,760.75 /	
89.8		6,231	2555	3,687	2556		
	252	Wirecut					
		48,637.69 /	2555	86,206.65 /	2556	37,568.96 /	
77.2		Wirecut	175	2555	96	2556	2556
							Wirecut
	253						
		39.02 /	2555	63.- /	2556	23.98 /	61.5
		1,686,914	2555	1,042,909	2556	2555	
	84			80		60	
2556							
	262						
		9.83 /	2555	27.09 /	2556	17.26 /	175.5
2556	-	17.573					Augmented Reality
Technologies (99)				

270
 2555 2555-2558

2556

332
 30.0 73,926.18 / 2555 96,090.08 / 2556 22,163.91 /
7 2555 6 2556 2556

344
 66.5 793.74 / 2555 1,321.41 / 2556 527.67 /
 2555 (. . . - . . .54) 1,439 2555 725 2556 1
. . 2555-2558 2555 2556

291
 504.5 202.33 / **(GIS)** 2555 1,223.13 / 2556 1,020.80 /
 2555 (GIS) 83,295 2555 10,975 2556
2556

292
 95.4 2,149.- / 2555 4,199.22 / 2556 2,050.22 /
4,223 2555 1,123 2556
2556

42.2 **304** 3,750.49 / 2555 5,332.83 / 2556 1,582.34 / 2555 457 2556

349 /
2556

	209	70,084.68 /	2555	10,180.99 /	2556	59,903.69 /	
85.5		30	2555	436	2556		
	2556						
	224	163,775.65 /	2555	13,479.74 /	2556	150,295.91 /	
91.8			5	2555	423	2556	2555
	2556						
	267	./					
		110.30 /	2555	43.24 /	2556	67.06 /	60.8
		242,100	2555	697,877	2556		
							4 (
	. . 2555-2558)	2555		. . 2555-2558			
						(PVM)	
150	50 / /	2556					
	/ /						
	331	288,953.91 /	2555	96,811.36 /	2556	192,142.54 /	
66.5				6	2555	20	2556
	342	.					
		2556					

	308											
46.2		622.83	/	.	2555	335.38	/	.	2556	287.45	/	.
						58,014	/	.	2555	211,508	/	2556
		2556										
	325											
26.1		14,130,764.28	/		2555	10,444,118.43	/		2556	3,686,645.84	/	
	326											
29.0		1,613,765.61	/		2555	1,146,067.34	/		2556	467,698.27	/	
	298											
	-					- HUB						
		229,403.27	/		2555	77,640.33	/		2556	151,762.94	/	
771.072	66.2			-						153.294		2555
	2556			6		2554-2555						
	301											
	/											
		41.68	/		2555	19.54	/		2556	22.14	/	53.1
	/											
2556						283,636			2555	1,023,804		2556
						2559-2562						

. . 2556

8

. 2555 (. . 54 - . . 55)									. 2556 (. . 55 - . . 56)										
																	I() %	I() %	I() %
1.	387,722,694.07	141,671,890.27	37,256,188.16	68,401,028.27	635,051,800.77	3,953.979		160,610.82	410,281,220.19	185,059,023.29	37,013,204.30	79,210,866.64	711,564,314.42	4,667.460		152,452.15	12.0	18.0	(5.1)
2.	214,891,894.46	18,647,051.79	26,525,742.88	23,169,027.88	283,233,717.01	2,065.954		137,095.85	256,628,525.29	25,950,206.22	25,545,934.24	28,758,649.18	336,883,314.93	2,298.145		146,589.23	18.9	11.2	6.9
3.	29,454,781.59	3,162,830.33	3,628,111.61	4,382,214.10	40,627,937.63	7,020		5,787.46	47,579,009.67	4,785,686.51	3,424,561.53	7,661,997.56	63,451,255.27	7,120		8,911.69	56.2	1.4	54.0
4.	153,881,056.69	47,930,515.63	13,188,277.31	25,193,078.35	240,192,927.98	4,580,000		52.44	171,548,412.43	59,091,507.09	13,594,725.40	31,404,594.36	275,639,239.28	5,287,000		52.14	14.8	15.4	(0.6)
	785,950,426.81	211,412,288.02	80,598,319.96	121,145,348.60	1,199,106,383.39				886,037,167.58	274,886,423.11	79,578,425.47	147,036,107.74	1,387,538,123.90						

(8)

	1										
		160,610.82	/	2555	152,452.15	/	2556	8,158.67	/		
713.481	5.1	<hr/>			3,953.979	2555	4,667.460	<hr/>		2556	
		18.0									
		()									
	2										
		137,095.85	/	2555	146,589.23	/	2556	9,493.39	/		
	6.9	<hr/>			<hr/>			<hr/>			
			/								
	3										
54.0		5,787.46	/	2555	8,911.69	/	2556	3,124.24	/		
Reality Technologies (<hr/>			17.573	<hr/>			<hr/>		Augmented
			99								
	4										
		52.44	/	2555	52.14	/	2556	0.31	/	0.6	
15.4		<hr/>			4,580,000	2555	5,287,000	2556	0.31	/	
	2556	<hr/>			<hr/>			707	<hr/>		2559-2562

. 2555 (. . 54 - . . 55)										. 2554 (. . 55 - . . 56)												
																				I()%	I()%	I()%
42	-	42	27,779,017.78	8,854,109.45	1,947,062.76	5,269,836.38	43,850,026.37	153,905	284,916.51	47,491,902.71	10,728,847.47	2,056,799.55	8,917,087.40	69,194,637.13	771,636	89,672.69	57.8	401.4	(68.5)			
43	/	43	72,328,389.54	29,201,967.87	5,434,161.73	13,375,721.34	120,340,240.48	4,784,040	25.15	73,455,358.23	33,723,313.63	5,740,012.18	17,383,324.70	130,302,008.74	5,509,228	23.65	8.3	15.2	(6.0)			
44	/	44	8,873,517.05	7,118,857.26	859,677.62	3,100,334.50	19,952,386.43	3,924	5,084.71	11,963,933.04	5,022,857.06	834,602.62	3,569,330.49	21,390,723.21	3,526	6,066.57	7.2	(10.1)	19.3			
45		45	3,826,855.47	1,247,437.71	188,797.09	933,968.39	6,197,058.66	587	10,557.17	2,684,438.09	1,677,138.46	181,595.67	1,099,444.24	5,642,616.46	457	12,347.08	(8.9)	(22.1)	17.0			
46		46	14,613,786.53	5,160,226.67	1,085,733.67	2,946,585.05	23,806,331.92	65,432	363.83	22,620,037.56	6,036,938.22	942,857.82	3,252,318.64	32,852,152.24	76,602	428.87	38.0	17.1	17.9			
47	/	50					0.00			3,275,613.58	2,018,639.60	291,041.44	1,248,829.17	6,834,123.79	34,473	198.25	100.0	100.0	100.0			
			785,950,426.81	211,412,288.02	80,598,319.96	121,145,348.60	1,199,106,383.39			886,037,167.58	274,886,423.11	79,578,425.47	147,036,107.74	1,387,538,123.90								

(9)

2

	/	10,272.66	/	2555	35,145.34	/	2556	24,872.68	/	
242.1	/			3,749	2555	2,089	2556			-
31.0835						16	4			
						33.152				
	1.754									

3

		48.12	/	2555	809.53	/	2556	761.41	/	
1,582.4		GIS		132,863	2555	8,279	2556	93.8		2555
		2556								0.139
			0.448							

8

		1,090,641.99	/	2555	1,620,254.56	/	2556	529,612.56	/	
	48.6			12	2555	13	2556			3.323
										4.594
			3.382							

9

		917.68	/	2555	5,129.37	/	2556	4,211.69	/	
458.9				4,928	2555	1,657	2556			66.4
2555					100%	2556				
			2556							4.011
			0.034							

	49								
		2556							
	27								
		75.34 /	2555	134.57 /	2556	59.23 /		78.6	
		1,686,914	2555	1,042,909	2556	2555			
		84		80		60			
		+	0.352					13.602	
	30								
		15.91 /	2555	41.64 /	2556	25.74 /			161.8
		17.573						Augmented	Reality
Technologies (99)			+		19.833	
		7.652							
	33								
		666,014.37 /	2555	1,408,344.03 /	2556	742329.66 /			
111.5		50		50	28	2555			
		2555-2558	2556						
								4	
									2556
	38								
		1,398.99 /	2555	2,702.79 /	2556	1,303.80 /			
93.2				138,945	2555	70,413		2555	

0.268

50

2556

4.339

+

1

4,711.48 /
30

2555
2555

3,238.48 /
436 2556

2556

1,473.- /

31.3

+

1.293

0.321

42

-

68.5

284,916.51 /

-

2555

89,672.69 /

6

2556

195,243.82 /

+

24.885

0.460

. . 2556

10

. 2555 (. . 54 - . . 55)									. 2556 (. . 55 - . . 56)										
																	I()%	I()%	I()%
1.	387,722,694.07	141,671,890.27	37,256,188.16	68,401,028.27	635,051,800.77	3,953.979		160,610.82	410,281,220.19	185,059,023.29	37,013,204.30	79,210,866.64	711,564,314.42	4,667.460		152,452.15	12.0	18.0	(5.1)
2.	214,891,894.46	18,647,051.79	26,525,742.88	23,169,027.88	283,233,717.01	2,065.954		137,095.85	256,628,525.29	25,950,206.22	25,545,934.24	28,758,649.18	336,883,314.93	2,298.145		146,589.23	18.9	11.2	6.9
3.	29,454,781.59	3,162,830.33	3,628,111.61	4,382,214.10	40,627,937.63	7.020		5,787.46	47,579,009.67	4,785,686.51	3,424,561.53	7,661,997.56	63,451,255.27	7,120		8,911.69	56.2	1.4	54.0
4.	153,881,056.69	47,930,515.63	13,188,277.31	25,193,078.35	240,192,927.98	4,580.000		52.44	171,548,412.43	59,091,507.09	13,594,725.40	31,404,594.36	275,639,239.28	5,287.000		52.14	14.8	15.4	(0.6)
	785,950,426.81	211,412,288.02	80,598,319.96	121,145,348.60	1,199,106,383.39				886,037,167.58	274,886,423.11	79,578,425.47	147,036,107.74	1,387,538,123.90						

(10)

1

713.481

5.1

_____	160,610.82	/	2555	152,452.15	/	2556	8,158.67	/
	_____			3,953.979		2555	4,667.460	2556
	18.0							
	()							

2

_____	137,095.85	/	2555	146,589.23	/	2556	9,493.39	/
6.9	_____		2555	_____				
	/							

3

54.0

Reality Technologies (

_____	5,787.46	/	2555	8,911.69	/	2556	3,124.24	/	
	-			17.573					Augmented
	_____		99	_____					

4

_____	52.44	/	2555	52.14	/	2556	0.31	/	0.6
	_____		4,580,000		2555	5,287,000		2556	707
15.4	2556								2559-2562

		. . 2555												. . 2556														
																										()%	()%	()%
75	85	3,878,848.70	279,807.00	32,417,751.87	586,996.27	-	37,163,403.84	47,580.00	-	654,681.00	1,749,032.23	2,451,293.23	39,614,697.07	4,318,204.32	192,510.00	4,319,009.05	802,205.32	-	9,631,928.69	600.00	-	739,688.00	1,840,782.13	2,581,070.13	12,212,998.82	(74.1)	5.3	(69.2)
76	86	7,810,462.09	-	395,382.80	2,391,039.66	-	10,596,884.55	3,500.00	-	1,456,340.00	2,483,743.33	3,943,583.33	14,540,467.88	10,521,976.97	18,425.00	597,015.35	2,842,248.32	-	13,979,665.64	2,600.00	-	2,417,326.23	2,672,813.36	5,092,739.59	19,072,405.23	31.9	29.1	31.2
77	87	3,521,692.56	18,600.00	76,157.98	428,575.59	-	4,045,026.13	14,700.00	-	352,303.00	440,290.00	807,293.00	4,852,319.13	3,386,499.26	625.00	79,907.08	502,256.79	-	3,969,288.13	-	-	247,531.00	402,203.51	649,734.51	4,619,022.64	(1.9)	(19.5)	(4.8)
78	88	4,831,909.27	56,254.00	341,439.31	702,327.17	2.00	5,931,931.75	32,510.00	-	351,124.00	1,726,108.36	2,109,742.36	8,041,674.11	4,874,142.83	41,680.00	395,004.60	772,598.84	7.00	6,083,433.27	7,300.00	-	381,804.80	1,532,630.41	1,921,735.21	8,005,168.48	2.6	(8.9)	(0.5)
79	89	5,806,588.80	190,534.00	250,534.89	1,558,518.58	-	7,806,176.27	5,300.00	-	704,658.00	1,541,088.63	2,251,046.63	10,057,222.90	8,136,079.08	124,974.75	819,991.60	5,709,663.60	-	14,790,709.03	65,010.00	-	959,089.80	2,788,391.83	3,812,491.63	18,603,200.66	89.5	69.4	85.0
80	90	3,358,573.64	81,019.99	81,670.73	527,240.50	2.00	4,048,506.86	3,800.00	-	276,764.00	297,889.68	578,453.68	4,626,960.54	2,935,826.34	80,689.00	62,707.10	584,927.37	380.40	3,664,530.21	5,100.00	-	159,663.91	665,443.78	830,207.69	4,494,737.90	(9.5)	43.5	(2.9)
81	91	3,699,574.87	-	52,308.02	436,188.56	1.00	4,188,072.45	4,000.00	-	453,934.00	329,648.51	787,582.51	4,975,654.96	3,884,032.32	42,938.00	54,314.23	537,931.14	-	4,519,215.69	-	-	210,951.41	249,877.46	460,828.87	4,980,044.56	7.9	(41.5)	0.1
82	92	3,672,764.56	-	120,785.20	485,238.89	127,743.13	4,406,531.78	-	-	464,000.00	364,535.78	828,535.78	5,235,067.56	3,589,728.91	-	145,985.98	550,857.28	10.00	4,286,582.17	82,360.00	-	603,893.00	249,377.70	935,630.70	5,222,212.87	(2.7)	12.9	(0.2)
83	93	3,766,432.54	-	80,500.17	545,993.47	11,456.42	4,404,382.60	-	-	107,731.00	742,252.25	849,983.25	5,254,365.85	3,839,038.19	13,142.00	89,809.67	640,466.57	4,049.67	4,586,506.10	-	-	231,937.60	750,862.50	982,800.10	5,569,306.20	4.1	15.6	6.0
84	94	4,241,611.87	96,787.00	91,444.49	569,121.57	15,450.64	5,014,415.57	-	-	106,367.37	412,732.91	519,100.28	5,533,515.85	3,894,131.43	26,486.00	106,069.23	620,466.20	-	4,647,152.86	33,800.00	-	237,589.00	1,098,097.31	1,369,486.31	6,016,639.17	(7.3)	163.8	8.7
85	95	3,491,096.20	81,407.00	22,389.89	435,870.41	5.00	4,030,768.50	-	-	54,340.00	584,242.25	638,582.25	4,669,350.75	3,416,629.76	96,189.00	63,000.61	503,976.60	-	4,079,795.97	108,000.00	-	88,374.00	806,272.00	1,002,646.00	5,082,441.97	1.2	57.0	8.8
86	116	-	-	196,218.16	66,246.77	-	262,464.93	-	-	695,792.00	451,027.84	1,146,819.84	1,409,284.77	1,245,376.18	-	238,566.22	414,188.95	-	1,898,131.35	67,200.00	-	512,483.00	745,070.84	1,324,753.84	3,222,885.19	623.2	15.5	128.7
		603,525,116.04	6,902,335.32	57,448,434.33	77,044,693.42	2,275,985.21	747,196,564.32	2,259,141.00	21,118.00	57,333,364.78	102,599,549.60	162,213,173.38	909,409,737.70	637,289,750.78	16,180,085.55	76,768,850.80	96,929,547.82	1,324,196.04	826,594,299.64	3,118,633.72	3,264,936.96	66,316,231.16	151,794,489.83	224,494,291.67	1,052,986,722.66	10.6	38.4	15.8
1	02	20,277,028.50	-	1,638,923.85	1,750,253.60	-	23,666,205.95	578,900.00	24,527,011.80	2,302,393.00	5,701,007.63	33,109,312.43	56,775,518.38	21,474,434.33	-	1,100,458.00	1,656,257.76	3.00	24,231,153.09	534,940.00	41,260,348.75	383,148.68	13,076,593.09	55,255,030.52	79,486,183.61	2.4	66.9	40.0
2	03	23,373,413.47	358,196.10	1,392,500.14	6,491,226.89	106.00	31,615,442.60	208,950.00	-	223,709.00	2,391,646.92	2,824,305.92	34,439,748.52	23,244,273.86	-	314,518.80	6,478,167.24	45,478.57	30,082,438.47	210,100.00	135,000.00	20,752.00	4,001,604.18	4,367,456.18	34,449,894.65	(4.8)	54.6	0.0
3	05	7,441,916.08	-	-	270,445.25	-	7,712,361.33	37,950.00	-	31,595.00	113,430.74	182,975.74	7,895,337.07	6,620,936.55	-	-	320,838.92	-	6,941,775.47	201,220.00	-	34,285.00	208,543.62	444,048.62	7,385,824.09	(10.0)	142.7	(6.5)
4	07	8,503,246.15	-	2,819,487.41	27,765,526.99	1,295,800.00	40,384,060.55	104,700.00	-	289,720.00	16,522,087.97	16,916,507.97	57,300,568.52	8,734,765.41	5,195,190.00	1,436,815.17	33,918,909.76	1.00	49,285,681.34	100,650.00	-	176,153.40	15,737,820.42	16,014,623.82	65,300,305.16	22.0	(5.3)	14.0
5	16	10,648,202.30	68,000.00	-	413,048.79	-	11,129,251.09	490.00	-	212,987.00	1,023,688.00	1,237,165.00	12,366,416.09	10,274,686.87	126,250.00	60,000.00	382,175.29	-	10,843,112.16	200.00	42,525.00	347,507.00	1,301,201.74	1,691,433.74	12,534,545.90	(2.6)	36.7	1.4
6	18	7,459,176.50	158,600.00	-	480,298.19	-	8,098,074.69	-	-	1,277,022.00	122,620.10	1,399,642.10	9,497,716.79	10,097,154.80	10,000.00	-	400,181.35	-	10,507,336.15	-	-	1,469,048.61	244,542.56	1,713,591.17	12,220,927.32	29.8	22.4	28.7
7	19	2,041,998.00	-	-	77,632.70	-	2,119,630.70	-	-	85,957.00	12,691.46	98,648.46	2,218,279.16	2,152,061.58	-	-	79,585.28	-	2,231,646.86	-	-	167,921.00	14,713.16	182,634.16	2,414,281.02	5.3	85.1	8.8
8	20	1,845,994.59	-	164,000.00	134,187.56	-	2,144,182.15	490.00	11,120,558.00	56,260.00	151,780.73	11,329,088.73	13,473,270.88	1,753,269.22	25.00	105,398.94	-	-	1,858,693.16	14,530.00	7,289,747.13	6,415.00	182,706.63	7,493,398.76	9,352,091.92	(13.3)	(33.9)	(30.6)
		81,590,975.59	584,796.10	6,014,911.40	37,382,619.97	1,295,906.00	126,869,209.06	931,480.00	35,647,569.80	4,479,643.00	26,038,953.55	67,097,646.35	193,966,855.41	84,351,582.62	5,331,440.00	2,911,816.97	43,341,514.54	45,482.57	135,981,836.70	1,061,640.00	48,727,620.88	2,605,230.69	34,767,725.40	87,162,216.97	223,144,053.67	7.2	29.9	15.0
		685,116,091.63	7,487,131.42	63,463,345.73	114,427,313.39	3,571,891.21	874,065,773.38	3,190,621.00	35,668,687.80	61,813,007.78	128,638,503.15	229,310,819.73	1,103,376,593.11	721,641,333.40	21,511,525.55	79,680,667.77	140,271,062.36	1,369,678.61	962,576,136.34	4,180,273.72	51,992,557.84	68,921,461.85	186,562,215.23	311,656,508.64	1,276,130,776.33	10.1	35.9	15.7

(/)(11)

17.573	09	20.236	81.0	Augmented Reality Technologies (-	99
31.0835	11	30.130	68.0	16	4	-
1.752	12	6.786	35.5		3.323	
4.759	21	7.735	118.9			-
		/			2559-2562	-
2.609	28	3.699	46.0			-

	31	1.552	26.5		0.586
	35	1.855	32.4		0.431
	-	0.905			
	38	4.022	46.6		1.415
2562	-	1.261	/	/	2559-
	42	2.995	25.2		2.994
	53	1.909	24.8		0.906
	/			2559-2562	
	57	7.427	43.6		-
1.840				-	1.600
	64	3.899	39.2		-
1.057					

2.199	66	4.941	40.7	-	-
0.666	74	2.139	34.6	-	-
	81	1.725	33.10	0.141	0.607
	86	4.532	31.2		2.712 0.961
/				2559-2562	
	89	8.546	85.0		2.329 - 1.284
2555	90	1.814	128.7		1.245

85	27.402	69.2	
28.167			
02	22.711	40.0	
18	2.723 5	28.7	2.638
2556			
20	4.121	30.6	3.831

	. 2555			. 2556			/()%	/()%	/()%
	55,260,005.86	-	55,260,005.86	55,454,630.96	158,209.69	55,612,840.65	0.4	100.0	0.6
	9,276,284.00	-	9,276,284.00	9,500,000.00	-	9,500,000.00	2.4	-	2.4
		299,309.80	299,309.80		87,275.00	87,275.00	-	(70.8)	(70.8)
	7,783,333.63	16,392,821.78	24,176,155.41	10,778,717.49	28,663,469.05	39,442,186.54	38.5	74.9	63.1
	6,718,035.21	-	6,718,035.21	6,765,045.38	-	6,765,045.38	0.7	-	0.7
	79,037,658.70	16,692,131.58	95,729,790.28	82,498,393.83	28,908,953.74	111,407,347.57	4.4	73.2	16.4

/	95.730	2555	111.407	2556	15.677	(/) (12)	16.4
	0.212		70.8				
	15.266		63.1		-		

. . 2556

- 1.
- 2.
- 3.
- 4.
- 5.
- 6.
- 7.

-

4

- 1:
- 2:
- 3:
- 4:

4

2555

. . 2556

()

- 1:
- 2:
- 3:
- 4:

18.0 %	5.1%	12.0 %
11.2 %	6.9 %	18.9 %
1.4 %	54.0 %	56.2 %
15.4 %	0.6 %	14.8 %

. . 2555

. . 2556

2 3	1 4

4

2

2

1

160,610.82 / 2555 152,452.15

/ 2556 8,158.67 / 5.1

3,953.979 2555 4,667.460

2556 713.481 18.0

()

4

52.44 / 2555 52.14 / 2556

0.31 / 0.6

4,580,000 2555 5,287,000 2556 707

15.4 2556

2559-2562

2

137,095.85 / 2555 146,589.23

/ 2556 9,493.39 / 6.9

2555 _____

/

3

5,787.46 / 2555 8,911.69 /

2556 3,124.24 / 54.0 _____

17.573

Augmented Reality Technologies (99)

. . 2556

4

1.	1	30	70	201-247, 280-297, 337, 345-348
2.	1	4	11	248-257, 298
3.	1	3	9	258-266
4.	1	10	28	267-273, 275-276, 278-279, 330-333, 338-339 299-305, 342-344, 349
	4	47	118	
**			24	307-317, 319-328, 334-335, 336
	4	47	142	

4

4

47

142

2555

- 46 47 (1) /

- 136 142 (6)

343

344

346

1

347

348

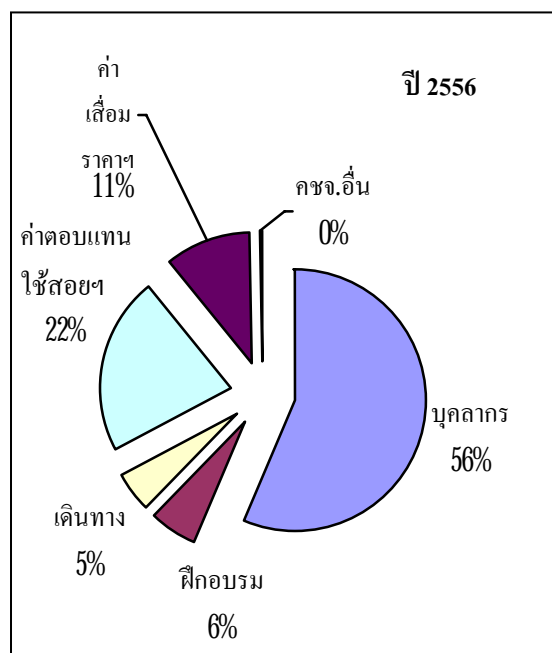
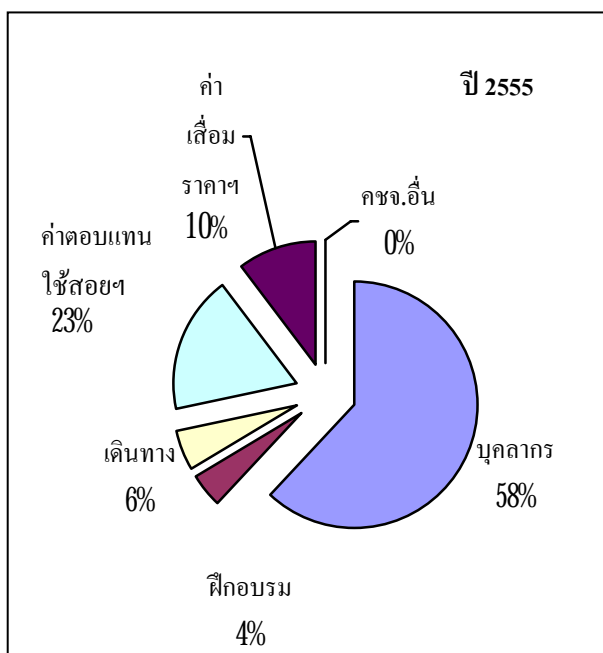
349 / /
/ /

1	18	2-4,7-9,11-12,17,20, 21-25,38,44-46, 48-49,50	12	1,5-6,10,13-16,18-19, 36-37,42-43
2	2	27-28	2	26,42
3	1	30	2	29,31
4	8	32-34,47,44-46,50	2	35,43
	29		18	

: 9

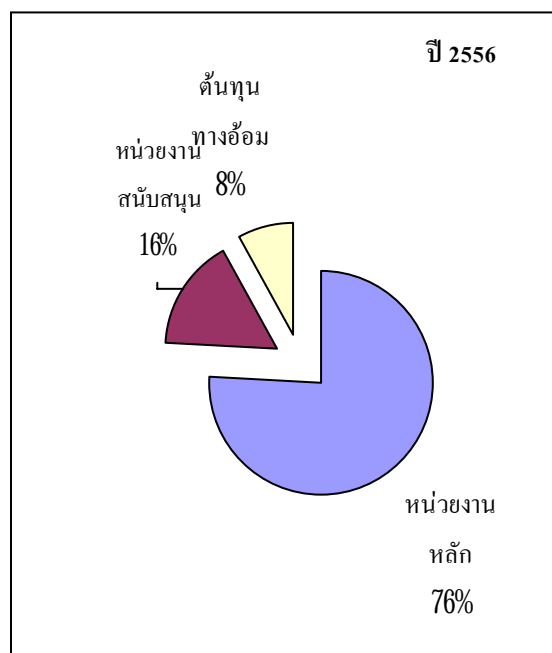
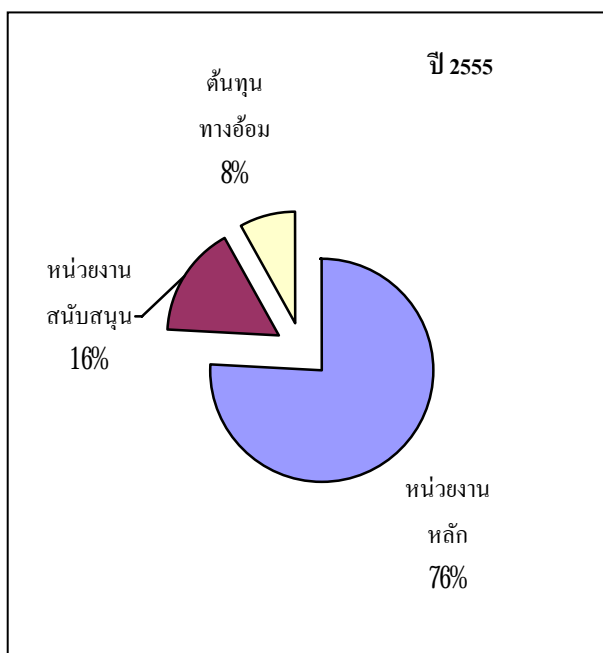
1	39	201,205,210,212-213, 215-216,218,220-221, 225,228,231,337,233, 235,240,346-348, 243-244,246-247,280, 282-283,286-287,289, 291-294,302-305,349	33	202-204,206-209,211, 214,217,219,222-224, 226-227,229-230,232, 234,236-239,241-242, 345,245,281,284-285, 288,290,295-297
2	10	248-257	1	298
3	5	258,262-263, 265-266	4	259-261,264
4	13	270-271,279,330,332, 338-339,344,302- 305,349	16	267-269,272-276, 331,278,342-343, 299-301,333
	11	307,309,314,316-317, 334,322-323,327-328	10	308,310-313,315, 335,324,336, 325-326
	78		64	

: 7



	2555		2556			%
		%		%		
	743.566	62.0	781.434	56.3	37.868	5.1
	52.432	4.4	83.004	6.0	30.568	58.3
	62.112	5.2	69.009	5.0	6.897	11.1
	216.278	18.0	305.685	22.0	88.557	40.9
	124.320	10.4	147.036	10.6	22.716	18.3
	0.398	0.0	1.370	.1	1.822	457.8
	1,199.106	100	1,387.538	100	188.432	

Augmented Reality Technologies



	2555		2556			%
		%		%		
	909.409	75.8	1,052.987	75.9	143.578	15.8
	193.967	16.2	223.144	16.1	29.177	15.0
	95.730	8.0	111.407	8.0	15.677	16.4
	1,199.106	100	1,387.538		188.432	

143.578

15.8

Augmented Reality Technologies

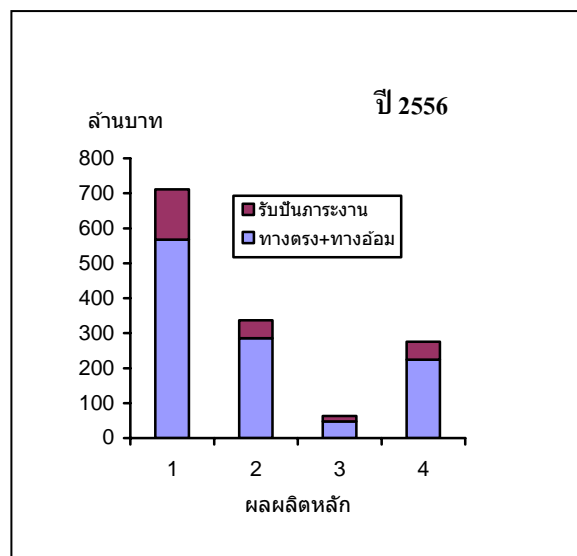
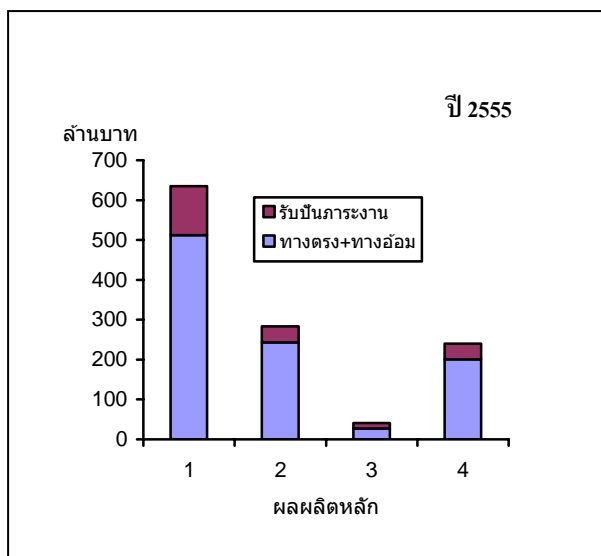
29.177

15.0

15.677

16.4

+



+

(:)

	. . 2555			. 2556		
	+			+		
1	512.349	122.703	635.052	567.795	143.770	711.565
2	243.603	39.630	283.233	285.710	51.173	336.883
3	27.587	13.041	40.628	47.200	16.251	63.451
4	200.640	39.553	240.193	224.267	51.372	275.639
	984.179	214.927	1,199.106	1,124.972	262.566	1,387.538

+

	+					
	()	() %	()	() %	()	() %
1	55.446	10.8	21.067	17.2	76.513	12.1
2	42.107	17.3	11.543	29.1	53.650	18.9
3	19.613	71.1	3.210	24.6	22.823	56.2
4	23.627	11.8	11.819	29.9	35.116	14.7
	140.793	14.3	47.639	22.2	188.432	15.7

2555 63.451 2556 22.823 + 3
 40.628
 56.2
 19.613
 3.210 +
 Augmented Reality
 Technologies

	+	:
	.2555	.2556
1	81 : 19	80 : 20
2	86 : 14	85 : 15
3	68 : 32	74 : 26
4	84 : 16	81 : 19
	82 : 18	81 : 19

2555 262.566 + .2555 .2556 214.927
 2556 + 47.639 22.2
 3
 22.711 40.0
 2.723 28.7
 2.638 2556
 5
 4.121 30.6
 3.831

. . 2556	2	4	. . 2555	2	_____
<hr/>					3
-		/			
Reality Technologies	2		Augmented		1
		_____			3,953.979
2555	4,667.460			2556	4
<hr/>					
4,580,000	2555	5,287,000		2556	
2559-2562					
			+		22.2
				16.733	
<hr/>					